



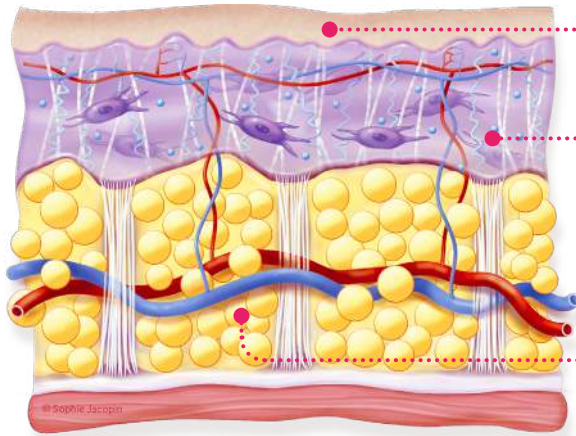
INNOVATION RANGE endermocell
THE ADVANCED MULTI-CORRECTION SOLUTION



**INNER POWER.
BETTER LIFE.**

endermologie.com

EVERYTHING THAT YOU WANTED TO KNOW ABOUT THE SKIN AND THE FIBROBLAST



OUR SKIN IS MADE UP OF THREE LAYERS:

- ◆ The **EPIDERMIS** (uppermost part of the skin): protects us from the exterior and limits the loss of the water that makes up 70% of our body.
- ◆ The **DERMIS**: includes collagen fibres and cells: the fibroblasts, essential skin cells that are found in the extracellular matrix (mixture of water and sugars, including hyaluronic acid or heparan sulfate that have the ability to retain water). The dermis is responsible for skin elasticity.
- ◆ **HYPODERMIS** (fat tissue): made up of adipocytes and the place where energy is stored.

The skin is an organ with its own very important protective and barrier functions.

It is made up of cells that are all in an extracellular medium, in which vessels pass to nourish skin along with nerves that give skin its sensitivity. The cells in the dermis- the fibroblasts - are very important. These are the cells that make up our skin, that produce the collagen fibres that come together and create large braids that will give skin rigidity, extensibility and elasticity.

Unfortunately, this fibroblast is a cell that ages. When the fibroblast is healthy, it will turn into a cell whose name is very important to remember: the myofibroblast.

Therefore, in order to have firm skin, we must have a cell that will attach itself to the collagen fibres and other cells to create something rigid to prevent our skin from sagging.

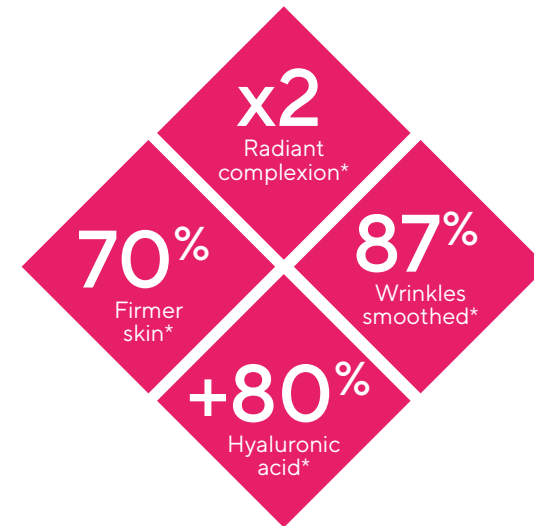
LPG endermologie® , A NATURAL ALTERNATIVE: STIMULATING OUR SKIN TO REACTIVATE DORMANT CELL ACTIVITY

The mechanical stimulation of cells, called endermologie®, thus reactivates their, awakening naturally and painlessly.

FOR THE FACE

Acting as a real skin workout, the motorised flaps awaken the natural synthesis of essential rejuvenating substances. This cell stimulation then helps the fibroblasts (rejuvenating cells) to boost their production of collagen (firmness), elastin (suppleness) and hyaluronic acid (volume & hydration), naturally present in our skin.

VISIBLE RESULTS FROM THE FIRST SESSION



As an expert, LPG® is innovating with new face skincare products.
A unique range that stimulates skin cells according to targeted needs.

endermo**cell**

endermocell,
FACE SKINCARE WITH CELL STIMULATION EXPERTISE

As an expert, LPG® is innovating with new face skincare products.
A unique range that stimulates skin cells according to targeted needs.

endermocell

Skincare targeting our cells' different needs
+
A unique core formula



endermocell, SKINCARE TARGETING OUR CELLS' DIFFERENT NEEDS

Today people are more aware that the skin is a living organ and that it must be protected. The skin is our 1st line of defense: both a barrier & a seal between our inner world & the world outside. It mirrors our inner life & bears the marks of external aggressions. It reflects not only our DNA but the different aspects of our lifestyle. As an expert brand, our commitment has always been to provide safe and effective products.

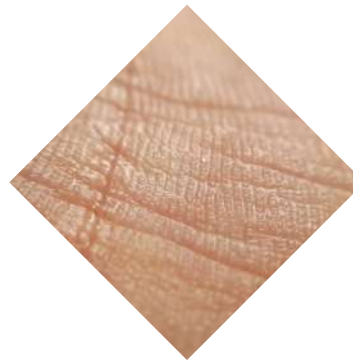
OUR VISION : EVERYTHING THAT HAPPENS IN YOUR LIFE HAS AN IMPACT ON YOUR SKIN

endermocell is a complete range that targets the needs of the skin through different stages with biocompatible formulas.



**REPLENISHING
ACTIVE HYDRATION**

For perfectly rehydrated skin, plumped with water and glowing with health.



**PLUMP UP
& FILL IN WRINKLES**

To relax the features without immobilising them, restore the density of the skin's support mattress and deliver a smoothing action on wrinkles, without irritating skin.



**REACTIVATE & PRESERVE
COLLAGEN**

To reinforce dermal anchoring, increase skin elasticity, fill in wrinkles and even out the complexion.

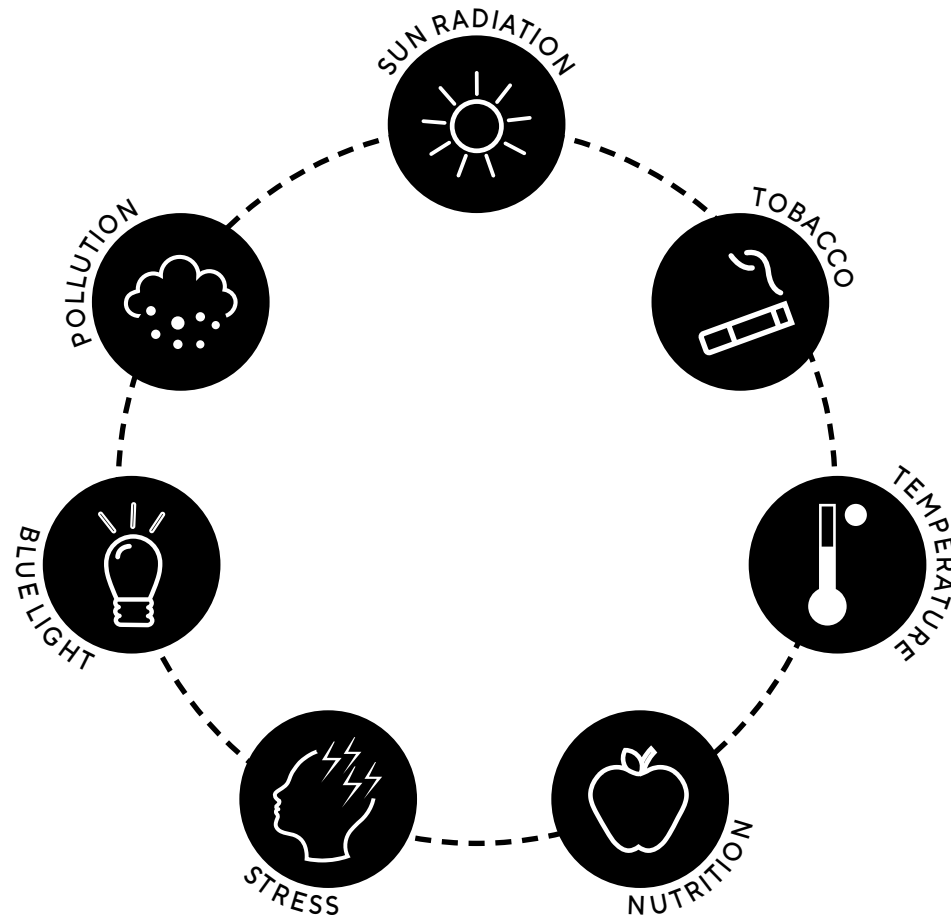
PROTECT SKIN HEALTH, TO PRESERVE SKIN BEAUTY

DO YOU KNOW WHY OUR SKIN AGES? CHRONOLOGICAL AGEING + EXPOSOME

We all have youthful reserves written in our genes, which diminish as the years go by and that inexorably impair our skin's ultra-fresh appearance. However, this ageing – described as **intrinsic or genetically programmed** – **is only responsible for 20% of skin ageing**. While our skin's appearance changes as we age, this is primarily because **80% of the signs of ageing are linked to external and internal factors**, grouped together under the term exposome.

The concept of exposome has been 1st described in 2005 by Christopher Wild. It corresponds to the cumulative impact of external and internal factors to which each of us are exposed from conception to death.

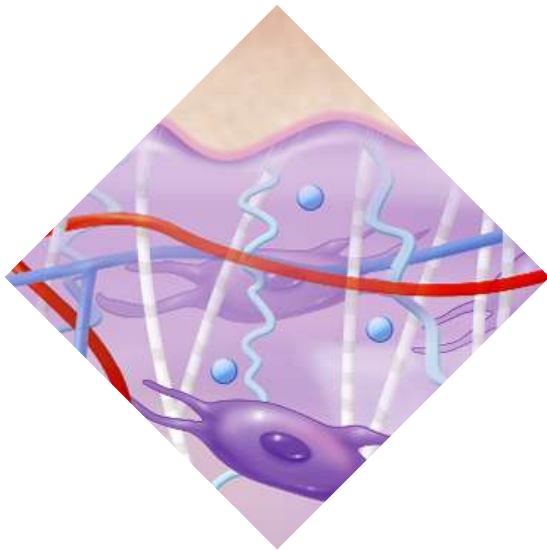
These factors will influence our general health and more specifically skin health beyond what's programmed by our genes. Exposome factors include environmental factors, behavioral factors but also hormonal variations you're going through. These aggressions or variations will affect the skin either taken separately or when they combine impacting skin biological functions and accelerating skin disorders such as skin ageing.



HOW DO WE TAKE ACTION?

We change our lifestyle habits, of course, but above all we protect skin from the harmful effects of radiation and purify skin from pollution.

EXPOSOME ACCELERATES HYALURONIC ACID ALTERATION ON TOP OF CHRONOLOGICAL AGEING



**CHRONOLOGICAL
AGEING**

+



EXPOSOME

FACTEURS
ENVIRONNEMENTAUX | HORMONAUX | LIFESTYLE

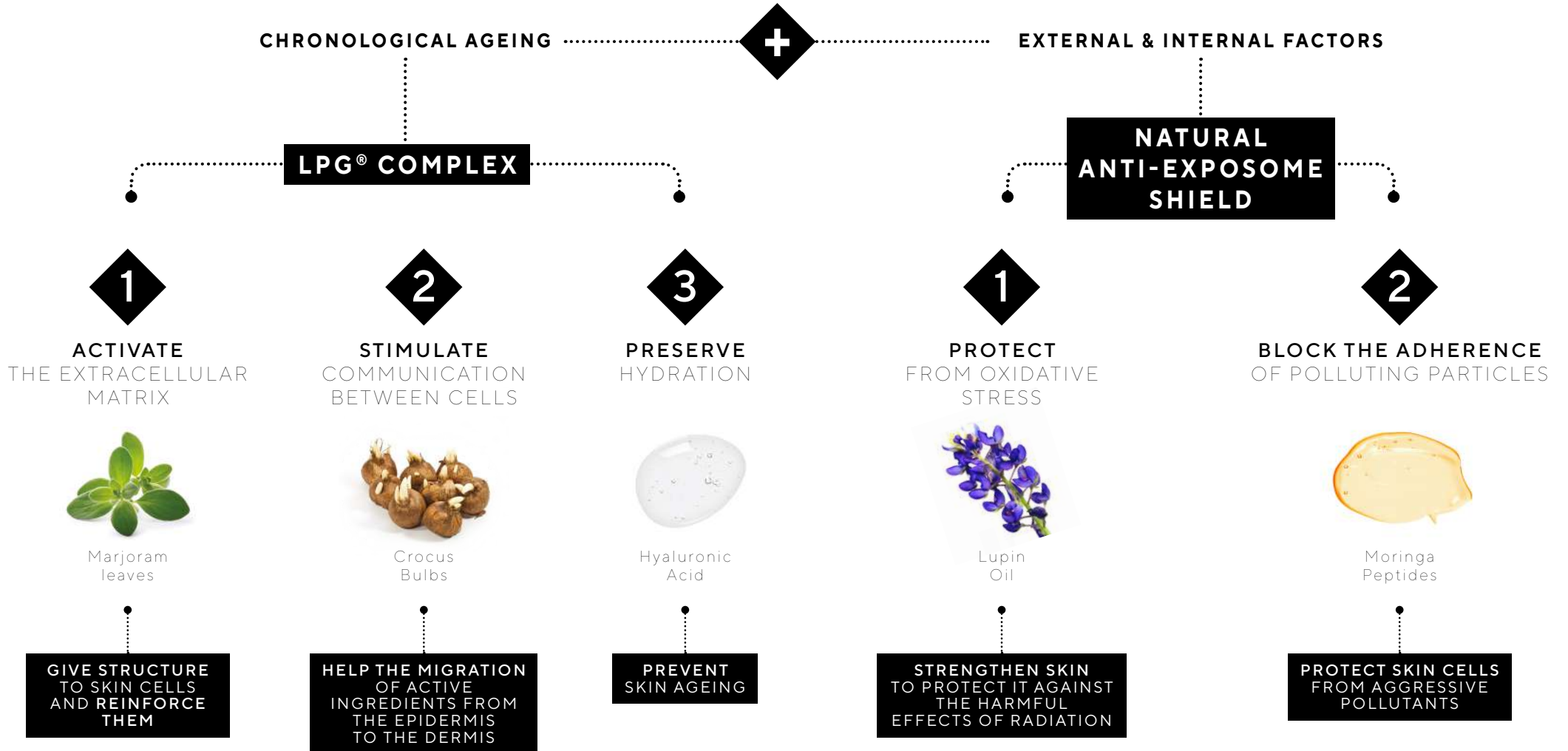
=

**EVERY DAY
OUR SKIN LOSES
MORE HYALURONIC
ACID THAN
IT CREATES**

For internal use only, cannot be used for public
communication, design in progress

**IT IS KEY TO RECHARGE DAILY LOSS OF HYALURONIC ACID
AND PROTECT IT FROM EXPOSOME AGGRESSIONS**

endermocell: A UNIQUE CORE FORMULA



endermocell: 2ND STEP

ADVANCED
MULTI-CORRECTION

=

TARGETING WRINKLES
FROM EVERY ANGLE



SLOW DOWN AGEING AND LIMIT THE MARKS OF TIME

OUR
CONSUMER
ANSWER

OUR WRINKLES ARE UNIQUE. THEY TELL OUR STORY AND ARE PART OF OUR IDENTITY.

However, they do not always reflect the image of ourselves that we would like to show to the world.

Although they are inevitable, we can take action to prevent their premature onset and diminish the overly prominent appearance of already established wrinkles.

At LPG® our aim is not to turn back time but to help every woman feel good about her age. Using innovative solutions that slow down the appearance of wrinkles and visibly minimise how they look, we are proud to reveal the beauty of all women, year after year.



THE COCOONING WOMAN

Over the years, I have noticed some fine lines appearing on my face. I need to find naturally formulated products focused on well-being that I can include in my routine while reducing skin ageing.



THE SEXY WOMAN

I like to look after my overall appearance. I focus on the smallest detail on my skin and on the slightest sign that could give away my age, so I often have salon treatments and use high-performance products. I am ready to try any new innovative programme and above all new anti-wrinkle products that use advanced technology and are, most importantly, effective with proven results.



THE CONFIDENT WOMAN

I am aware that I am no longer 20 and that I have some wrinkles, but I accept them. For me, our skin reflects our life experiences. Having said that, if I could benefit from a multi-action hydrating product that targets these signs of ageing, I would definitely try it.



THE INSECURE WOMAN

I wear lots of make-up to hide my wrinkles because they embarrass me. I've started to realise that I need to focus on finding effective products to reduce my concerns. I want to find simple products that work quickly.



A STORY AND AN EXPLANATION BEHIND EVERY WRINKLE

Over the years, different types of wrinkles gradually appear on the face and shape our appearance. Under the influence of our lifestyle, some of them become established quite quickly and show the signs of passing time.

FINE LINES AND FIRST WRINKLES

THE CAUSES

Dehydration and fatigue.

LOCATION

The most prominent are located in the eye contour area, but fine lines (very small wrinkles) are noticed all over the face and become deeper as time passes.

EXPRESSION WRINKLES

THE CAUSES

Skin deformations caused by repetitive muscle movements that shape and reveal our different expressions but then leave visible marks on the skin.

LOCATION

Crow's feet, forehead, between the eyes, around the mouth.

DEEP WRINKLES

THE CAUSES

A decrease in the quantity of support fibres (particularly collagen and elastin) in the dermis then causes a loss of support for the skin surface. This natural phenomenon progresses with age and is made more prominent by repeated and prolonged sun exposure.

LOCATION

All over the face, fine lines turn into wrinkles.



WHAT CAN BE DONE?

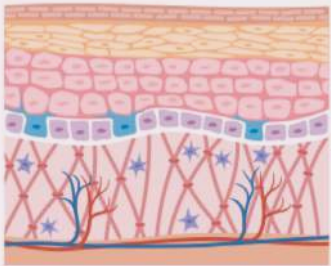
**TAKE ACTION EARLY TO PREVENT THE DECREASE
IN SUPPORT FIBRES AND IMPROVE THEIR QUALITY**

WRINKLES, THE FIRST VISIBLE SIGNS OF AGEING AND A MAJOR CONCERN FOR WOMEN

The skin is the organ that shows the most visible signs of ageing. While skin ageing – and the resulting appearance of wrinkles – is inescapable, understanding the processes that cause and influence it is essential to slowing it down and maintaining radiant skin.

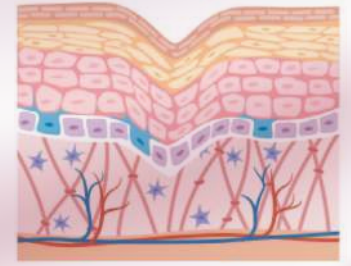
DEEP WRINKLES

Wrinkles are hollow folds on the surface of the skin, with a depth of between a few micrometres (fine lines) and a few millimetres (deep wrinkles). But if they appear on the surface, they are actually the consequence of deeper structural changes in the dermis.



In fact, it is important to see the dermis as a type of fibre network that gives the skin its structure (= the framework). It is surrounded by molecules like hyaluronic acid, which can fill up with water to form a kind of gel and give the skin support and a plump appearance: together, these molecules make up the extracellular matrix.

Over the years, this network of fibres (mainly collagen and elastin) and hyaluronic acid becomes thinner and its supportive effect declines too. The surface of the skin then becomes less tight, not as well supported, and wrinkles form and become hollow.



HOW DO WE ACT?

WE REVIVE CELL'S ACTIVITY, COMPENSATE, FILL IN AND PROTECT.

2022 INNOVATION: A COMPLETE ACTION FOR VISIBLY DIMINISHED WRINKLES AND LONG-LASTING PLUMPER SKIN

A new range of high-performance, highly effective and highly sensory skincare specially formulated to target wrinkles from every angle and restore the skin's natural beauty.

FUNDAMENTAL SKINCARE TO STIMULATE AND RECHARGE THE SKIN

A combination of powerful ingredients stimulates the skin's ability to regenerate for reinvented anti-wrinkle effectiveness:

- Prevents fine lines
- Fills in deep wrinkles
- Smooths the skin surface

The skin is smoothed, wrinkles are filled.
The skin is plumped and more youthful.

Clinically tested under dermatological control, the products in this anti-wrinkle range can be used on their own or in combination with our endermologie® treatments.

A CONCEPT BASED ON 2 COMPLEMENTARY ACTIONS FOR A FILLED, SMOOTHED AND PLUMPED UP SKIN.

ADVANCED MULTI-CORRECTION

REVIVE - COMPENSATE - FILL IN

Take action deep within the skin to target wrinkles from every angles:

By redensifying the skin tissue's support fibers to maintain a strong skin structure and by mechanically smoothing the surface of the skin. It reveals a smoothed, plumped and radiant aspect.

TARGETED CORRECTIONS

REINFORCED AND TARGETED ACTIONS

Reinforce the benefits of anti-wrinkle actions

By taking effective action to smooth the skin and detoxify cells.

Even out the complexion

With a mattifying texture and action for warm seasons or combination to oily skin

Improve visible results on the skin in the eye contour area.

By correcting skin disorders that make the skin look dull.

ADVANCED MULTI-CORRECTION LPG®

« TOUCH - FEEL - SEE »

ACTS SIMULTANEOUSLY ON ALL TYPES OF WRINKLES

1ST WRINKLES, EXPRESSION LINES AND DEEP WRINKLES OF THE FACE AND NECK

TOUCH

INSTANT AND LONG-LASTING
SMOOTHING FILLER EFFECT

PLUMPED UP
SKIN

CASHMERE TEXTURES
THAT MERGE WITH THE SKIN

FEEL

HYDRATES
AND COMFORTS

SMOOTHS
AND STIMULATES

FRUITY FLORAL
FRAGRANCE

SEE

RELAXES FACIAL
AND NECK FEATURES

FILLS IN SURFACE
AND DEEP WRINKLES

ENHANCED AND
BRIGHTENED SKIN

LPG® INNOVATION:

A COMPLETE AND COMPLEMENTARY WRINKLE FILLER RANGE,
TO USE ACCORDING TO INDIVIDUAL NEEDS

1

endermocell EYE CREAM

Smoothing cream specifically formulated for the delicate eye contour area with an anti-wrinkle, anti-dark circle and anti-puffiness effect.



2

endermocell SMOOTHING FILLER MILK SERUM

A concentrate of plumping and revitalizing active ingredients. Its milky texture diffuses into the skin to stimulate, detoxify and boost youth cells.



3

endermocell SMOOTHING FILLER CREAM

A nourishing cashmere cream texture for a smoothing, plumping and protective treatment.



OR

endermocell SMOOTHING FILLER GEL-CREAM

A light texture and a mattifying effect to reveal smoother, even and protected skin.



ADVANCED MULTI-CORRECTION



POLYPHENOLS

CONTAINED IN ALL THE PRODUCTS

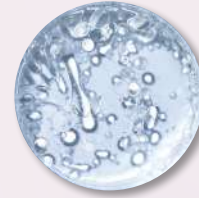
except the SMOOTHING FILLER MILK SERUM

The polyphenols in our formulas are derived from a rare product full of active ingredients, originating from a unique process in Switzerland: ice wine. To obtain this precious ice wine, the grapes are only harvested in early winter so that they can freeze naturally before being picked directly by hand.

This extraordinary technique helps the ice wine to become enriched with polyphenols, powerful active ingredients renowned for their deep and long-lasting action. Combined with a high molecular weight plant polysaccharide that has a tightening effect, they work in synergy to smooth the skin immediately after application.

RESULT

Fine lines and expression wrinkles are instantly smoothed, and their depth is visibly reduced. The skin's radiance and freshness are restored.



ANTI-AGEING PEPTIDES

CONTAINED IN ALL THE PRODUCTS

This complex combining 2 anti-ageing peptides takes effective action to replenish collagen loss caused by ageing and reinforces the structural elements that support the skin. These genuine messengers reactivate our own cells' production of collagen fibres and help to arrange them in the dermis. The skin's structural elements are deeply reinforced thanks to this extraordinary complex which takes action on all 3 skin layers - the epidermis, dermis and the membrane connecting them (the dermal-epidermal junction) - to deliver a rapid anti-ageing effect and prevent premature ageing.

RESULT

The skin is plumper and more supple, and wrinkles are filled.



HYALURONIC ACID

CONTAINED IN ALL THE PRODUCTS

This low molecular weight hyaluronic acid can easily penetrate into the different skin layers to take action deep down.

RESULT

The skin is hydrated and plumper from the inside.

ITS ANTI-AGEING POWER:

This advanced multi-correction is the result of the blend of polyphenols (ice wine), a new generation of bioactive peptides and hyaluronic acid. This trio of active ingredients works in synergy to fill and smooth all wrinkles, from the first fine lines to deep wrinkles, revealing all the beauty of a plumper skin.

TARGETED CORRECTIONS

REINFORCED ACTIONS TO BOOST WRINKLE-FILLING EFFECTIVENESS

CONTAINED IN THE SMOOTHING FILLER MILK SERUM



RETINOL-LIKE

A precious youth molecule with a biological action identical to retinol, Rambutan leaves have extraordinary rejuvenating properties. They reinforce the 3D network of skin support fibres by stimulating the synthesis of collagen and elastin microfibrils and helping to arrange them into resistant fibres. Are of natural origin and contain all the benefits of retinol without its irritating effects, making it perfectly tolerated by the most sensitive skin.

RESULT

More supple skin and filled wrinkles.



WHITE HOREHOUND

With its ability to neutralise oxidative elements, it detoxifies cells of waste generated by pollution and reinforces natural defence systems.

RESULT

Detoxified skin and delayed signs of ageing.

TARGETED ACTIONS TO COMPLETE THE ANTI-AGEING BENEFITS



BACTERIAL FERMENT EXTRACT

CONTAINED IN THE EYE CREAM

A real 3-in-1 active ingredient, bacterial ferment extract works on different targets for a global action on wrinkles, dark circles and bags.

- It promotes cell renewal and cohesion in the epidermis for smooth and strengthened skin
- It reduces blood vessel permeability to reduce the formation of puffiness
- And breaks down pigmentation in the eye contour area to diminish the appearance of dark circles.

RESULT

Fresh and brighter eye contours.



ANNATTO SEEDS

CONTAINED IN THE SMOOTHING FILLER GEL-CREAM

Naturally rich in polysaccharides, annatto seeds take global action to reduce shine, pore size and skin imperfections. Through their sebum-regulating action, they mattify and enhance the skin with their ability to fight hyperkeratinisation in the epidermis for tighter pores.

RESULT

Sublimated, evened out and mattified skin all day long.

endermocell ADVANCED MULTI-CORRECTION

A 3-STEP RITUAL:

1. Eye Cream
2. Smoothing Filler Milk Serum
3. Smoothing Filler Cream and/or Smoothing Filler Gel-Cream



endermocell EYE CREAM

SMOOTHS, REPLUMPS, BRIGHTENS FOR FRESHER, RESTED EYES

This smoothing cream helps to **visibly rejuvenate** the eye contour with its **triple action: it smooths wrinkles, reduces dark circles and diminishes the appearance of puffiness.**

To better protect this fragile area, the Eye Cream **also protects against various external aggressors** (blue light, pollution).

This fragrance-free, soft and smooth cream delivers immediate comfort to this delicate area.

In a few seconds **the eye contour is brighter and looks completely rested and visibly smoother.**



HOW TO USE

- Apply morning and evening following the natural direction of the lymphatic circulation.
- Apply light pressure with fingertips from the inner corner of the eye outwards.
- Repeat the step on the upper eyelid.



Retail: **15 ml bottle with box**
French Recommended Catalog Price: **€29.90 excl. tax**
French Recommended Retail Price: **€59.80 incl. tax**
Ref: **102446300**
Ean: **3607490244630**

Professional: **75 ml tube no box**
French Recommended Catalog Price: **€48.00 excl. tax**
Ref: **102446400**
Ean: **3607490244647**

endermocell EYE CREAM

ITS ACTIVE INGREDIENTS

EXCLUSIVE LPG® COMPLEX + NATURAL ANTI-EXPOSOME SHIELD + ADVANCED MULTI-CORRECTION + TARGETED CORRECTION

BACTERIAL FERMENT EXTRACT

3-in-1 active ingredient that acts on different targets for a global action. It promotes cell renewal and cohesion, reduces vascular permeability and degrades pigmented products in the eye area.

RESULT:

the appearance of dark circles and puffiness is visibly reduced, wrinkles and fine lines are smoothed out, for a fresh and brighter eye contour.

POLYPHENOLS

Instantly smooth the skin with an immediate and long-lasting mechanical effect.

RESULT:

fine lines and wrinkles are instantly smoothed, and their depth visibly reduced.

ANTI-AGEING PEPTIDES

Act to compensate collagen loss by reactivating their production and promoting their organization within the dermis. They also strengthen the structural elements that support the skin.

RESULT:

the skin is plumper and more supple, thus preventing the appearance of new fine lines. Existing wrinkles are filled in.

HYALURONIC ACID

Low molecular weight, that penetrates deeply into the skin.

RESULT:

the skin is plumped from the inside.

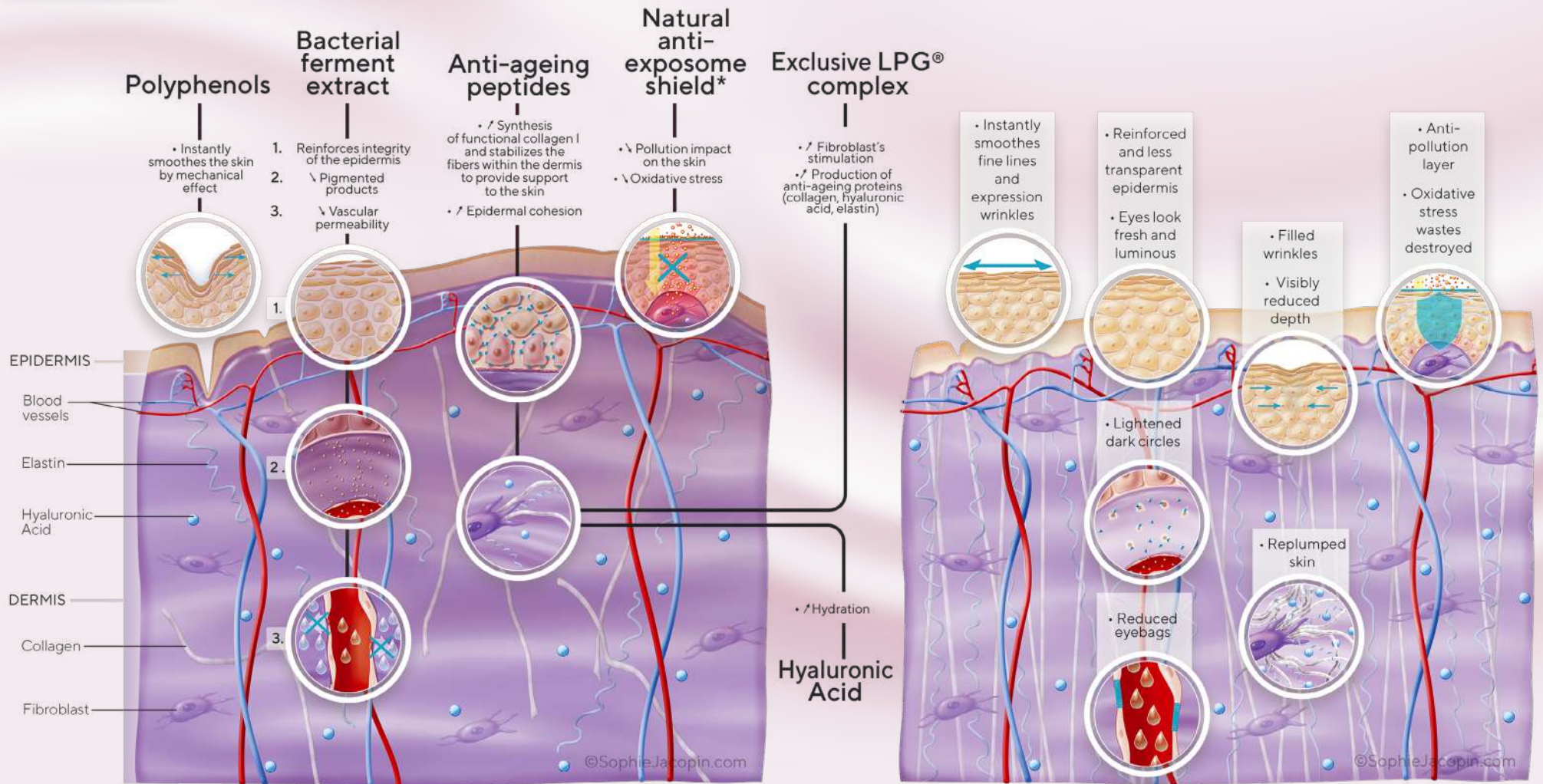


EYE CREAM'S ACTIONS



BEFORE

AFTER



*Moringa Peptides +Lupin oil

endermocell EYE CREAM

TOLERANCE TESTED
UNDER DERMATOLOGICAL &
OPHTHALMOLOGICAL CONTROL

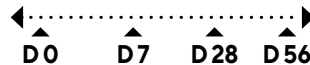
OBJECTIVE

TO PROVE THE SMOOTHING, ANTI-DARK
CIRCLE AND ANTI-WRINKLE EFFECT



Study conducted on a panel of women:

- Aged 35-55
- All skin types
- Fine lines, crow's feet and drooping eyelids
- Dark circles and puffiness around the eyes
- Dull and tired complexion



Skincare application 2x/d morning and evening

Tests carried out:

- Skin Image Analyser® (S.I.A®)
- TiVi 700® measurements on dark circles
- Corneometer®
- Clinical scorages
- Self-assessment questionnaire



endermocell EYE CREAM CLINICAL RESULTS

ANTI-WRINKLE EFFICACY

- Total number of wrinkles around the eye: **-30%**⁽¹⁾
- Including deep wrinkles: **-12%**⁽¹⁾
- Length of wrinkles: **-15%**⁽¹⁾

Visible anti-wrinkle effect (**ANTI-WRINKLE EFFECT PANELIST PICTURES + SIA® imprints**)

ANTI-DARK CIRCLES EFFICACY

- Dark circles colouring:
D28: **-10%**⁽²⁾
D56: **-31%**⁽²⁾

Microcirculation is reactivated for a better anti-dark circles effect (**TiVi 700® results**)

ANTI-PUFFINESS EFFICACY

- Puffiness is less visible and less swollen:
D28: **-13%**⁽³⁾
D56: **-33%**⁽³⁾

EYE CONTOUR OPTIMAL HYDRATION

- **+19%**⁽⁴⁾ hydration after 8 hours

SELF-ASSESSMENT QUESTIONNAIRE

RESULT	D28
WRINKLES⁽⁵⁾	
Eye area is less wrinkled	92%
Smooths the appearance of fine lines and wrinkles around the eyes and eyelids	97%
Crow's feet wrinkles seem filled	91%
DARK CIRCLES⁽⁶⁾	
Dark circles are less dark	87%
PUFFINESS⁽⁷⁾	
Puffiness are reduced, deflated	88%
OVERALL APPEARANCE OF THE SKIN⁽⁵⁾	
Eye area is hydrated	97%
Skin around the eyes is more comfortable	97%
Skin around the eyes is plumper	89%
Entire eye contour area is sublimated and illuminated	91%

(1) % reduction in number of wrinkles measured with S.I.A®, 32 women (35-55 years) with several types of wrinkles - twice daily application for 7 days. (2) Clinical scoring of dark circles, 22 people at D28 and 23 people at D56 (35 to 55 years old) - twice daily application for 28 and 56 days. (3) Clinical scoring of puffiness, 16 people at D28 and 17 people at D56 (35-55 years) - twice daily application for 28 and 56 days. (4) Hydration test with a Corneometer®, 28 women (21-50 years) with dry skin. (5) % satisfaction in self-assessment, 36 women (35-55) with several wrinkle types - applied twice daily for 28 days. (6) % satisfaction in self-assessment, 22 women (35-55) with several wrinkle types - applied twice daily for 28 days. (7) % satisfaction in self-assessment, 16 women (35-55) with several wrinkle types - applied twice daily for 28 days.

EYE CREAM



CLARINS
MULTI-ACTIV
EYE

€47.50
15ML
€3,066.70/L

(internet,
perfumery,
institute, e-shop)

FILORGA
TIME FILLER
EYES

€51.90
15ML
€3,460.00/L

(internet, e-shop,
perfumery)

SOTHYS
RADIANCE CREAM
FOR WRINKLES,
DARK CIRCLES
AND PUFFINESS

€52.50
15ML
€3,500.00/L

(internet, beauty
salons, e-shop)

MARIA GALLAND
250 HYDRA GLOBAL
EYE CONTOUR

€58.00
15ML
€3,266.67/L

(internet, perfumery,
beauty salons,
e-shop)

LPG®
EYE
CREAM

€59.80
15ML
€3,986.67/L

(internet,
beauty salons)

PHYTOMER
EXPERTISE ÂGE
CONTOUR

€66.60
15ML
4,440.00€/L

(beauty salons,
e-shop)

CARITA
NEOMORPHOSIS
EYE CREAM

€83.00
30ML
5,533.33€/L

(internet, beauty
salons)

COUNTER-ARGUMENTS

- **MARIA GALLAND:** presence of alcohol
- **CLARINS:** presence of alcohol - no instrumental results, only self-satisfaction
- **SOTHYS:** presence of PEG and alcohol
- **CARITA:** presence of alcohol, aluminium salts and PEG - no information on clinical studies
- **PHYTOMER:** presence of alcohol, silicones and PEG
- **FILORGA:** LPG results are better on the smoothing aspect of the product and on the reduction of the colouring of dark circles

COMPARISON OF LPG® EYE CARE



NEEDS	HYDRATION	WRINKLES		PREMIUM
NAMES	EYE BALM	TOTAL EYE CARE End of life when product runs out of stock	EYE CREAM	EYE AND LIP CONTOUR CREAM
PRICE	€48.00/15ML €3,200.00/L	€51.00/20ML €2,550.00/L	€59.80/15ML €3,986.67/L	€56.00/9ML €6,222.22/L
TEXTURE	Creamy balm	Smooth cream	Soft and melting cream	Opalescent light fluid
ACTIONS	Hydrates, anti-dark circles, prevents puffiness	Focus on wrinkles, anti-dark circles, anti-puffiness	Anti-wrinkle, anti-dark circles, anti-puffiness	Global anti-ageing, lifting
DIFFERENTIATING FACTORS	<ul style="list-style-type: none"> • Exclusive LPG® Complex • Natural anti-exposome shield • Replenishing active hydration • Illuminating pearlisers • Clinical studies 	<ul style="list-style-type: none"> • Anti-Ageing LPG® Complex 	<ul style="list-style-type: none"> • Exclusive LPG® Complex • Natural anti-exposome shield • Advanced multi-correction • Bacterial ferment extract • Clinical studies 	<ul style="list-style-type: none"> • Premium LPG® Complex • ITD technology • Decongestant zamak applicator

endermocell SMOOTHING FILLER MILK SERUM

REGENERATES, STIMULATES, BRIGHTENS FOR VISIBLY REDUCED WRINKLES, FIRM AND RADIANT SKIN

A source of exceptional vitality for youthfully radiant skin.

This Serum is a real **infusion of active ingredients** that diffuse deep inside the skin **to stimulate and detoxify cells.**

Its precious retinol-like active ingredient simultaneously takes action on the **3 types of wrinkles:** dehydration, expression and deep wrinkles.

The skin is visibly revitalized. The face is instantly plumped up and wrinkles are gradually reduced to reveal smooth, plump and healthy-looking skin.

Its milk fluid texture is quickly absorbed.



HOW TO USE

- Apply morning and evening to cleansed skin by gently massaging the face, neck and décolleté.
- Prepare the skin for the benefits of the Smoothing Filler Cream / Smoothing Filler Gel-Cream.



Retail: **30 ml bottle with box**
French Recommended Catalog Price: **€41.00 excl. tax**
French Recommended Retail Price: **€82.00 incl. tax**
Ref: **102444500**
Ean: **3607490244456**

Professional: **100 ml pump bottle no box**
French Recommended Catalog Price: **€66.00 excl. tax**
Ref: **102444600**
Ean: **3607490244463**

endermocell SMOOTHING FILLER MILK SERUM

ITS ACTIVE INGREDIENTS

EXCLUSIVE LPG® COMPLEX + ADVANCED REPLUMPING + TARGETED CORRECTION



WHITE HOREHOUND

Detoxifies cells of the waste generated by pollution and strengthens the natural defense system.

RESULT:
detoxified skin.



RETINOL-LIKE

RAMBUTAN LEAF EXTRACT

Valuable molecule with an action identical to the one of retinol. It strengthens the 3D network of skin support fibers by stimulating the synthesis of collagen and elastin microfibrils.

RESULT:
wrinkles are deeply filled in, features are smoothed, and the skin is more supple.



HYALURONIC ACID

Low molecular weight, that penetrates deeply into the skin.

RESULT:
the skin is plumped from the inside.



ANTI-AGEING PEPTIDES

Act to compensate collagen loss by reactivating their production and promoting their organization within the dermis. They also strengthen the structural elements that support the skin.

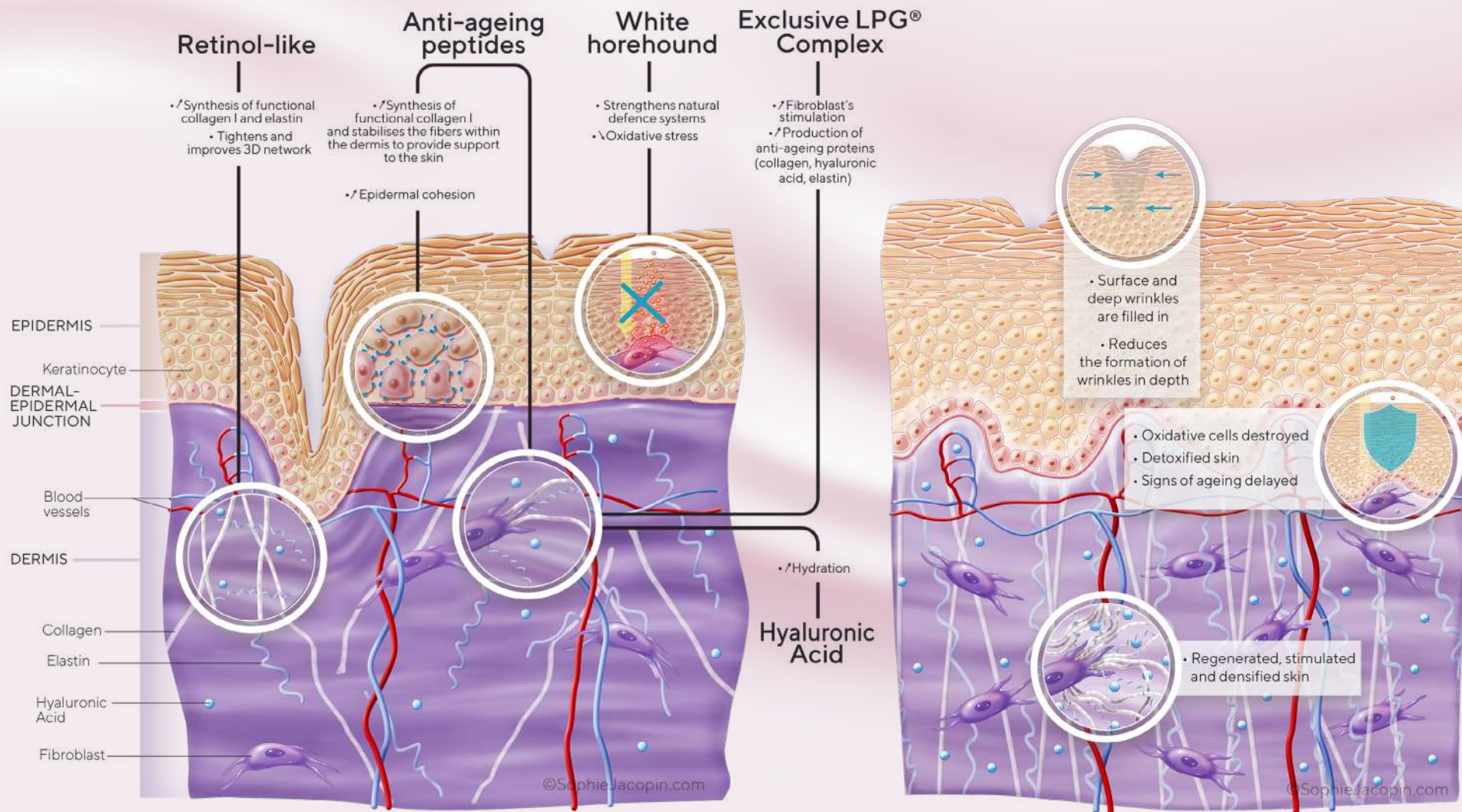
RESULT:
the skin is plumper and more supple, thus preventing the appearance of new fine lines. Existing wrinkles are filled in.

SMOOTHING FILLER MILK SERUM'S ACTIONS



BEFORE

AFTER



endermocell SMOOTHING FILLER MILK SERUM

TOLERANCE TESTED
UNDER DERMATOLOGICAL
CONTROL

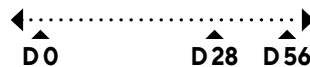
OBJECTIVE

TO PROVE THE SMOOTHING, PLUMPING
AND ANTI-WRINKLE EFFECT



Study conducted on a panel of women:

- Aged 36-55
- All skin types
- Dull and tired complexion
- Fine lines, wrinkles on crow's feet and on the face



Skincare application 2x/d morning and evening

Tests carried out:

- Skin Image Analyser® (S.I.A®)
- Clinical scorages
- Self-assessment questionnaire



endermocell

SMOOTHING FILLER MILK SERUM

CLINICAL RESULTS

ANTI-WRINKLE EFFICACY

- Length of wrinkles: **-13%**⁽¹⁾
- Skin is plumped: **+16%**⁽²⁾
- Younger-looking skin: **+26%**⁽³⁾
- Visible anti-wrinkle effect (**3D PRIMOS®LITE picture**)

OVERALL APPEARANCE OF THE SKIN

- Skin is less tired: **-10%**⁽²⁾

RESULTS	D28
ANTI-WRINKLE EFFICACY	
Skin is plumped	88%
Skin is smoother	96%
Wrinkles and fine lines are less visible	84%
OVERALL APPEARANCE OF THE SKIN	
Skin looks rested	100%
Skin is more luminous and glowing, the complexion is fresher	92%
Skin regains its suppleness and elasticity	92%
Complexion is more even	87%
Skin is reinforced against environmental factors	75%

(1)% reduction in length of wrinkles, measures with S.I.A®, 26 women (36 to 55 years old) with several types of wrinkles - twice-daily application for 28 days. (2) Clinical scoring, 30 women (36 to 55 years old) with several types of wrinkles - twice-daily application for 28 days. (3) % satisfaction in self-assessment, 33 women (36 to 55 years old) with several types of wrinkles - twice-daily application for 56 days. (4) % satisfaction in self-assessment, 24 women (36 to 55 years old) with several types of wrinkles - twice-daily application for 28 days.

SMOOTHING FILLER MILK SERUM



PAYOT
PLUMPING
BOOSTER
SERUM

€65.00
50ML
€1,300.00/L

(internet,
institut, e-shop)

FILORGA
TIME-FILLER
INTENSIVE

€65.90
30ML
€2,196.70/L

(internet, e-shop,
perfumery)

ELLA BACHÉ
MAGISTRAL
SERUM
TISSULEX 14%

€71.50
30ML
€2,216.70/L

(internet, beauty
salons, e-shop)

PHYTOMER
OLIGOFORCE
ADVANCED

€78.55
30ML
€2,618.30/L

(beauty salons,
e-shop)

THALGO
INTENSIVE WRINKLE
CORRECTING
SERUM

€79.00
30ML
€2,633.30/L

(internet, beauty
salons, e-shop)

LPG®
SMOOTHING
FILLER MILK
SERUM

€82.00
30ML
€2,733.33/L

(internet,
perfumery,
e-shop)

SOTHYS
WRINKLE
SPECIFIC
YOUTH SERUM

€83.50
30ML
€2,783.30/L

(internet, beauty
salons, e-shop)

CARITA
NEOMORPHOSIS
SERUM

€99.00
30ML
€3,300.00/L

(internet, beauty
salons, e-shop)

**SKIN
CEUTICALS**
SILYMARIN CF

€157.70
30ML
€5,356.70/L

(internet,
e-shop)

COUNTER-ARGUMENTS

- **SOTHYS:** presence of PEG and alcohol
- **ELLA baché:** presence of alcohol
- **CARITA:** presence of alcohol and colorants
- **FILORGA:** presence of PEG and alcohol
- **PHYTOMER:** presence of PEG and colorants
- **THALGO:** presence of PEG derivatives
- **SKIN CEUTICALS:** presence of PEG derivatives

COMPARISON OF LPG® SERUMS



NEEDS	HYDRATION		RADIANCE	WRINKLES	PREMIUM
NAMES	INTENSE HYDRATING SMOOTHING SERUM	OIL-IN-WATER REPLENISHING SERUM	RADIANCE BRIGHTENING SERUM	SMOOTHING FILLER MILK SERUM	ANTI-AGEING RENEWAL SERUM
PRICE	€54.00/40ML €1,350.00/L	€70.00/30ML €2,333.33/L	€72.00/30ML €2,400.00/L	€82.00/30ML €2,733.33/L	€129.00/30ML €4,300.00/L
TEXTURE	Smooth fluid	Oil-in-water	Fluid	Milky fluid	Fluid
ACTIONS	Hydrates, smooths, anti-wrinkle	Hydrates, antioxidant, revitalising	Hydrates, illuminates, reduces pigmentation spots	Anti-wrinkle, revitalising, plumping	Global anti-ageing, lifting
DIFFERENTIATING FACTORS	<ul style="list-style-type: none"> • High-molecular weight hyaluronic acid • Surface action 	<ul style="list-style-type: none"> • Exclusive LPG® Complex • Replenishing active hydration • White horehound • Clinical studies 	<ul style="list-style-type: none"> • Anti-Ageing LPG® Complex 	<ul style="list-style-type: none"> • Exclusive LPG® Complex • Retinol-Like • Advanced replumping • White horehound • Clinical studies 	<ul style="list-style-type: none"> • Premium LPG® Complex • ITD technology

endermocell SMOOTHING FILLER CREAM

REGENERATES, REPLUMPS, SMOOTHS FOR PLUMPER, SMOOTHER AND PROTECTED SKIN

A combination of technology and nature, the cream provides advanced multi-correction that stimulates the synthesis of functional collagen and redensifies the skin.

The skin is visibly regenerated and protected, and wrinkles are filled and smoothed.

The skin appears plumper, smoother and more supple.

Its exceptionally silky and nourishing texture delivers optimal comfort all day long.



HOW TO USE

- Apply morning and/or evening by gently massaging the face, neck and décolleté



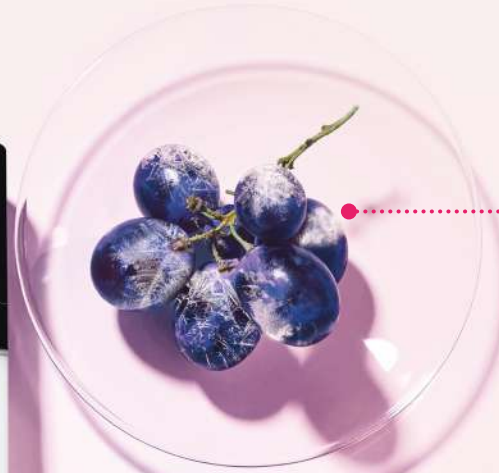
Retail: **50 ml bottle with box**
French Recommended Catalog Price: **€39.90 excl. tax**
French Recommended Retail Price: **€79.80 incl. tax**
Ref: **102442600**
Ean: **3607490244265**

Professional: **200 ml pump bottle no box**
French Recommended Catalog Price: **€64.00 excl. tax**
Ref: **102442700**
Ean: **3607490244272**

endermocell SMOOTHING FILLER CREAM

ITS ACTIVE INGREDIENTS

EXCLUSIVE LPG® COMPLEX + NATURAL ANTI-EXPOSOME SHIELD + ADVANCED MULTI-CORRECTION



POLYPHENOLS

Instantly smooth the skin with an immediate and long-lasting mechanical effect.

RESULT:

fine lines and wrinkles are instantly smoothed, and their depth visibly reduced.



ANTI-AGEING PEPTIDES

Act to compensate collagen loss by reactivating their production and promoting their organization within the dermis. They also strengthen the structural elements that support the skin.

RESULT:

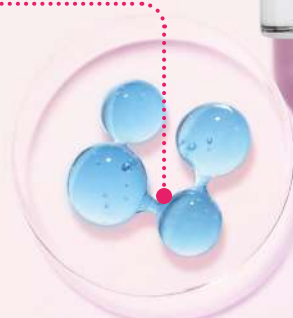
the skin is plumper and more supple, thus preventing the appearance of new fine lines. Existing wrinkles are filled in.

HYALURONIC ACID

Low molecular weight, that penetrates deeply into the skin.

RESULT:

the skin is plumped from the inside.

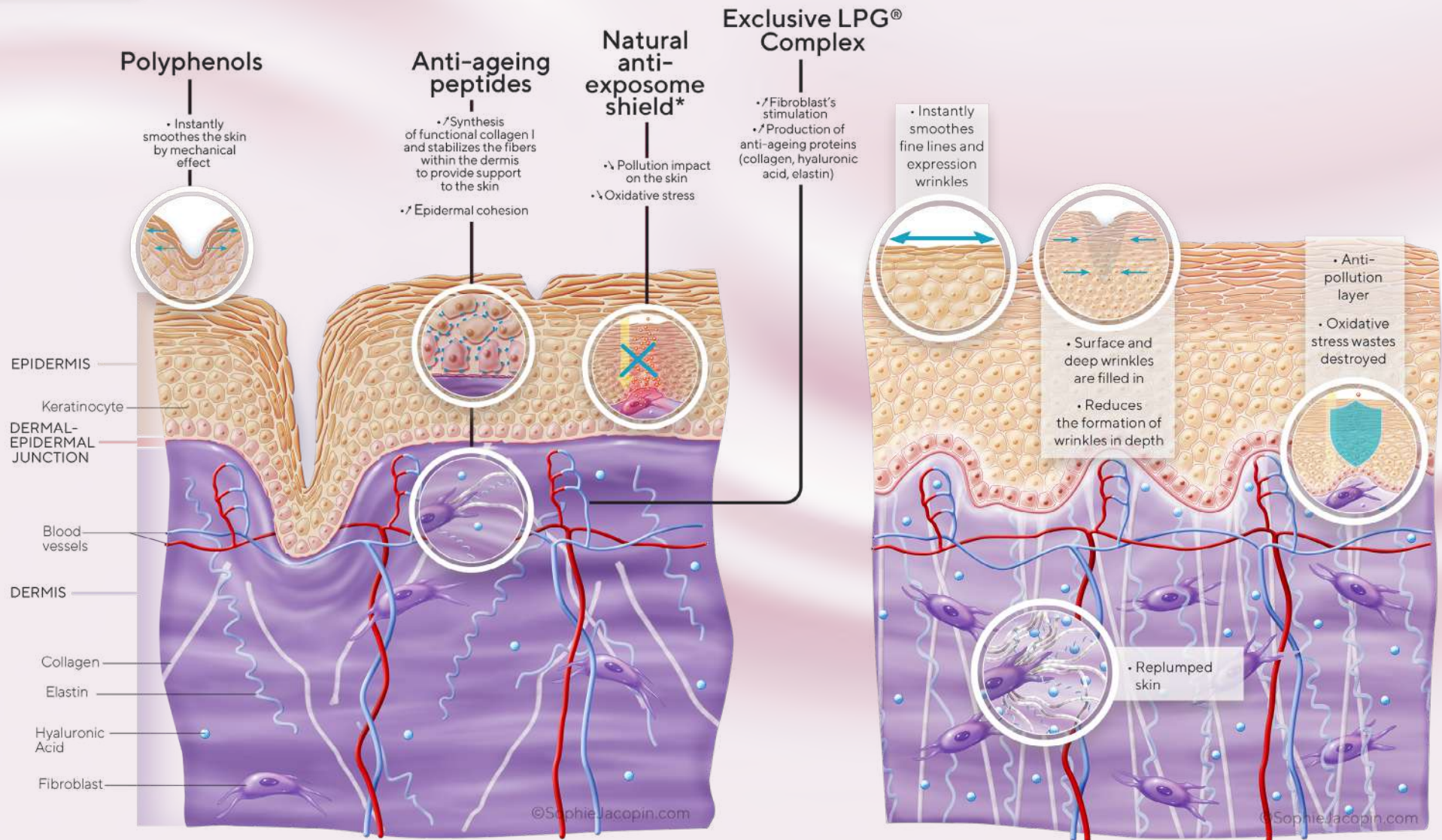


SMOOTHING FILLER MILK SERUM'S ACTIONS



BEFORE

AFTER



endermocell SMOOTHING FILLER CREAM

TOLERANCE TESTED
UNDER DERMATOLOGICAL
CONTROL

OBJECTIVE

TO PROVE THE ANTI-WRINKLE,
SMOOTHING, PLUMPING
AND PROTECTIVE EFFECT



Study conducted on a panel of women:

- Aged 35-55
- Normal to dry skin
- Dull and tired complexion
- Fine lines and wrinkles on the face



Skincare application 2x/d morning and evening:

Tests carried out:

- Skin Image Analyser® (S.I.A®)
- Spectrophotometer®
- Clinical scorages
- Corneometer®
- Self-assessment questionnaire



endermocell

SMOOTHING FILLER CREAM

CLINICAL RESULTS

WRINKLES ARE VISIBLY REDUCED

- Total number of wrinkles: **-24%**⁽¹⁾
- Including deep wrinkles: **-28%**⁽¹⁾
- Length of wrinkles: **-13%**⁽²⁾
- Visible anti-wrinkle effect (**ANTI-WRINKLE EFFECT PANELIST PICTURES + SIA® imprints + 3D PRIMOS® LITE**)

HEALTHY GLOW EFFECT

- Healthy complexion: **+12%**⁽³⁾
- Skin is less tired: **-26%**⁽⁴⁾
- Skin hydration: **+23%**⁽⁵⁾ after 8H
- Skin is more comfortable: **+53%**⁽⁶⁾

THE SKIN'S APPEARANCE IS CLEARLY IMPROVED

- Skin is more supple: **+15%**⁽⁴⁾
- Skin is plumped, smoothed and plumped up:
D28: **+11%**⁽⁷⁾
D56: **+18%**⁽⁴⁾

SELF-ASSESSMENT QUESTIONNAIRE⁽⁶⁾

RESULT	D28
ANTI-WRINKLE EFFICACY	
Skin is smoother	82%
Skin is relaxed	76%
OVERALL APPEARANCE OF THE SKIN	
Skin regains its suppleness and elasticity	88%
Skin looks plumper	82%
Skin is more comfortable	87%
Skin is nourished	94%
Skin is more luminous/glowing	85%

(1) % reduction in number of wrinkles/ (2) % reduction in length of wrinkles, measured with S.I.A.®, 30 women (36-55 years) with several types of wrinkles - twice daily application for 28 days(1)/56 days(2). (3) Spectrophotometer® scoring, 31 women - twice daily application for 28 days. (4) Clinical scoring, 31 people - twice daily application for 56 days. All tests performed under dermatological control. (5) Hydration test with a Corneometer®, 29 women (21 to 51 years old) with dry skin. (6) % satisfaction in self-assessment, 31 women with several types of wrinkles (36 to 55 years old) - twice daily application for 28 days. (7) Clinical scoring, 31 people - twice daily application for 28 days.

SMOOTHING FILLER CREAM



PAYOT
WRINKLE
SMOOTHING
CREAM

€61.00
50ML
€1,220.00/L

(internet,
institut, e-shop)

FILORGA
TIME-FILLER

€65.90
50ML
€1,318.00/L

(internet, e-shop,
perfumery)

ELLA BACHÉ
SPIRULINA
WRINKLE-LIFTING
RICH CREAM

€67.50
50ML
€1,310.00/L

(internet, beauty
salons, e-shop)

CLARINS
MULTI-ACTIVE
DAY CREAM

€67.50
50ML
€1,320.00/L

(internet,
perfumery, beauty
salons, e-shop)

THALGO
WRINKLE
CORRECTIN RICHE
CREAM

€70.00
50ML
€1,360.00/L

(internet, beauty
salons, e-shop)

PHYTOMER
EXPERT
YOUTH

€78.00
50ML
€1,457.00/L

(beauty salons,
e-shop)

LPG®
SMOOTHING
FILLER CREAM

€79.80
50ML
€1,596.00/L

(internet,
beauty salons)

CARITA
NEOMORPHOSIS
CREAM

€129.00
50ML
€2,580.00/L

(internet, beauty
salons)

COUNTER-ARGUMENTS

- **SOHYS:** presence of PEG and alcohol
- **FILLORGA:** presence of PEG and alcohol
- **CARITA:** presence of PEG, alcohol, colorants - no clinical studies carried out
- **CLARINS:** presence of PEG, alcohol - no clinical studies carried out
- **ELLA BACHÉ:** presence of PEG and alcohol
- **PHYTOMER:** presence of PEG and alcohol

COMPARISON OF LPG® FACIAL TREATMENTS



NEEDS	HYDRATION	WRINKLES		FIRMNESS		PREMIUM
NAMES	DYNAMIC REPLENISHING GEL-CREAM	REPLENISHING FIRMING CREAM End of life when product runs out of stock	SMOOTHING FILLER CREAM	TENSING FIRMING CREAM	FIRMING V-SHAPING CREAM	ANTI-AGEING RENEWAL CREAM
PRICE	€64.00/50ML €1,280.00/L	€72.00/50ML €1,440.00/L	€79.80/50ML €1,596.00/L	€72.00/50ML €1,440.00/L	€72.00/50ML €1,440.00/L	€109.00/50ML €2,180.00/L
TEXTURE	Gel-cream	« Foam » cream	Soft and melting cream	Rich, non-greasy emulsion	Light fluid	Light cream
ACTIONS	Hydrates, revitalising	Anti-ageing, redensifying focus	Anti-wrinkle, plumping	Anti-ageing, focus on firmness	Anti-ageing, focus refining	Global anti-ageing
DIFFERENTIATING FACTORS	<ul style="list-style-type: none"> • Exclusive LPG® Complex • Natural anti-exposome shield • Replenishing active hydration • Clinical studies 	<ul style="list-style-type: none"> • Anti-ageing Exclusive LPG® Complex • Lipoamino acid insulin biovector 	<ul style="list-style-type: none"> • Exclusive LPG® Complex • Natural anti-exposome shield • Advanced multi-correction • Clinical studies 	<ul style="list-style-type: none"> • Anti-ageing Exclusive LPG® Complex • Oat-based sugars 	<ul style="list-style-type: none"> • Anti-ageing Exclusive LPG® Complex 	<ul style="list-style-type: none"> • Premium LPG® Complex

endermocell SMOOTHING FILLER GEL-CREAM

REGENERATES, REPLUMPS, EVENS OUT FOR VISIBLY SMOOTHER AND MORE EVEN SKIN

A combination of technology and nature, the gel-cream provides advanced multi-correction that stimulates the synthesis of functional collagen and redensifies the skin.

The skin is visibly regenerated and protected, and wrinkles are filled and smoothed.

The skin appears plumper, smoother and more supple.

Its formula is enriched with a regulating action to target shine and reduce the appearance of pores.

This light and hydrating gel-cream with many beneficial properties helps to restore smoother, visibly even and mattified skin instantly upon application.



HOW TO USE

- Apply morning and/or evening by gently massaging the face, neck and décolleté.



Retail: **50 ml bottle with box**
French Recommended Catalog Price: **€39.90 excl. tax**
French Recommended Retail Price: **€79.80 incl. tax**
Ref: **102443700**
Ean: **3607490244371**

Professional: **flacon pompe 200 ml**
French Recommended Catalog Price: **€64.00 excl. tax**
Ref: **102443800**
Ean: **3607490244388**

Sample: **2mL bag in the sample card**
Ref quatuor endermocell anti-wrinkle 4 x 2 ml: **102572300**

endermocell SMOOTHING FILLER GEL-CREAM

ITS ACTIVE INGREDIENTS

EXCLUSIVE LPG® COMPLEX + NATURAL ANTI-EXPOSOME SHIELD + ADVANCED MULTI-CORRECTION + TARGETED CORRECTION

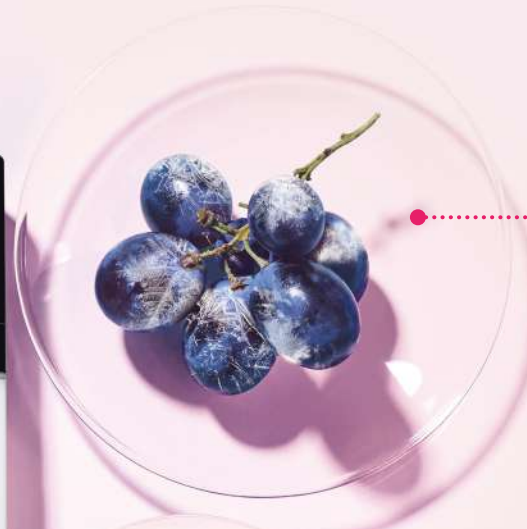
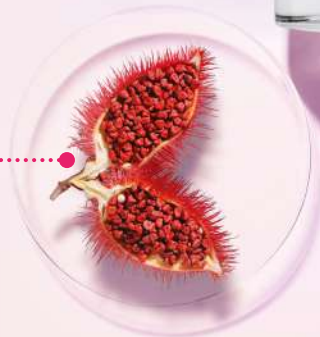


ANNATTO SEEDS

Thanks to its sebum-regulating action, the seeds mattify the skin and beautify it by its capacity to fight against hyperkeratinisation of the epidermis for tighter pores.

RESULT:

a sublimated, unified and mattified skin all day long.



POLYPHENOLS

Instantly smooths the skin with an immediate and long-lasting mechanical effect.

RESULT:

fine lines and wrinkles are instantly smoothed, and their depth visibly reduced.



HYALURONIC ACID

Low molecular weight, that penetrates deeply into the skin.

RESULT:

the skin is plumped from the inside.



ANTI-AGEING PEPTIDES

Act to compensate collagen loss by reactivating their production and promoting their organization within the dermis. They also strengthen the structural elements that support the skin.

RESULT:

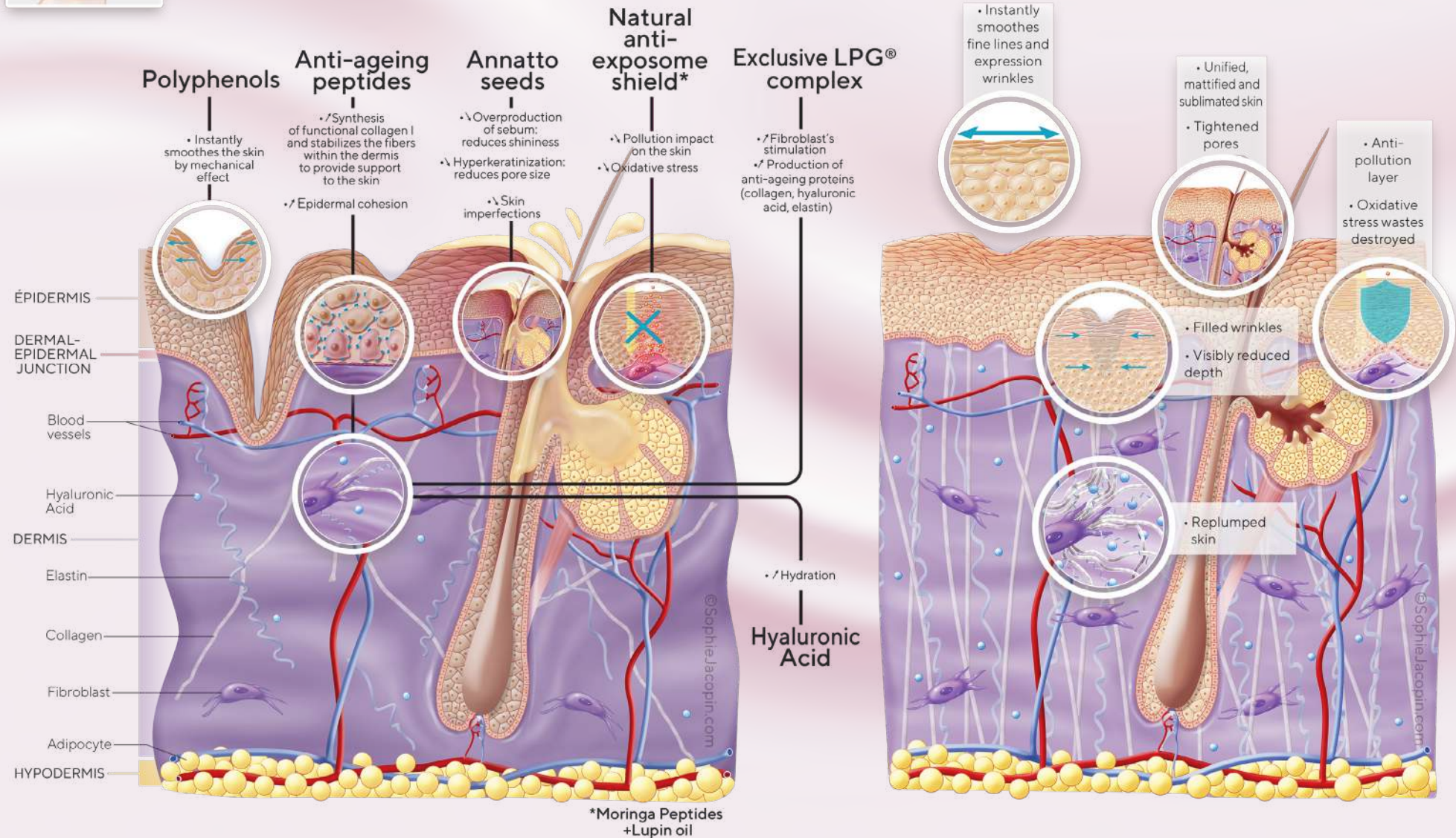
the skin is plumper and more supple, thus preventing the appearance of new fine lines. Existing wrinkles are filled in.

SMOOTHING FILLER GEL-CREAM'S ACTIONS



BEFORE

AFTER



endermocell SMOOTHING FILLER GEL-CREAM

TOLERANCE TESTED
UNDER DERMATOLOGICAL
CONTROL

OBJECTIVE

TO PROVE THE ANTI-WRINKLE,
PLUMPING AND MATTIFYING EFFECT
OF THE GEL-CREAM



Study conducted on two panels of women:

- Caucasian women age 42 - 54
- All skin types
- Dull and tired complexion
- Fine lines and wrinkles on the face
- Asian women aged 19 - 38
- Combination to oily skin and acne-prone



Skincare application 2x/d morning and evening:

Tests carried out:

- Self-assessment questionnaire
- Skin Image Analyser® (S.I.A®)
- Clinical scorages



endermocell

SMOOTHING FILLER GEL-CREAM

CLINICAL RESULTS

WRINKLES ARE VISIBLY REDUCED

- Total number of wrinkles is reduced: D56: **-21%**⁽¹⁾
- Including deep wrinkles: **-26%**⁽²⁾
- Visible anti-wrinkle effect (**SIA® imprints + 3D PRIMOS-CR®**)

THE SKIN'S APPEARANCE IS CLEARLY IMPROVED

- The skin is plumped up:
D28 : **+11%**⁽³⁾
D56 : **+18%**⁽⁴⁾
- Smooth skin appearance:
D28 : **-14%**⁽³⁾
D56 : **-23%**⁽⁴⁾
- Signs of fatigue and ageing are reduced:
D28 : **-18%**⁽³⁾
D56 : **-25%**⁽⁴⁾

HEALTHY GLOWFACT

- Skin is less tired: **-25%**⁽⁴⁾

SELF-ASSESSMENT QUESTIONNAIRE

RESULT	D28
ANTI-WRINKLE EFFICACY⁽⁵⁾	
Skin is smoother	97%
Skin looks plumper	94%
Wrinkles and fine lines are less visible	81%
IMPERFECTION CONTROL⁽⁶⁾	
Skin is more matified ⁽⁴⁾	100%
Pores are tightened	95%
Shininess is controlled	91%
Imperfections are reduced ⁽⁴⁾	100%

(1)(2)% reduction in the number of wrinkles measured with the S.I.A®, 27 women (42 to 54 years old) with several types of wrinkles - twice daily application for 56 days (1) / 28 days (2). (3)(4) % Clinical scoring, 33 people - twice daily application for 28 (3) / 56 days (4). (5) % satisfaction in self-evaluation, 33 women with several types of wrinkles (42 to 54 years old) - twice daily application for 28 days. (6) % satisfaction in self-evaluation, 22 women (19 to 38 years old) with mixed to oily skin and several types of wrinkles - twice daily application for 28 days. All tests are performed under dermatological control.

SMOOTHING FILLER GEL-CREAM



LIERAC
CICA-FILLER
MAT

€42.00
40ML
€1,050.00/L

(internet,
pharmacy,
e-shop)



CLARINS
MULTI-ACTIVE
DAY

€67.50
50ML
€1,320.00/L

(internet,
perfumery,
e-shop, beauty
salons)



THALGO
GEL-CRÈME
CORRECTION RIDES

€68.00
50ML
€1,360.00/L

(internet, beauty
salons, e-shop)



LPG®
SMOOTHING
FILLER
GEL-CREAM

€79.80
50ML
€1,596.00/L

(internet,
beauty salons)

COUNTER-ARGUMENTS

- **LIERAC:** presence of alcohol - no instrumental results, only self-satisfaction
- **CLARINS:** presence of alcohol, sulphates, colorants - no clinical studies carried out
- **THALGO :** presence of alcohol - no clinical studies carried out

COMPARISON OF LPG® FACIAL TREATMENTS



NEEDS	HYDRATION	WRINKLES		FIRMNESS			PREMIUM
NAMES	DYNAMIC REPLENISHING GEL-CREAM	SMOOTHING FILLER CREAM	SMOOTHING FILLER GEL-CREAM	TENSING FIRMING CREAM	REPLENISHING FIRMING CREAM End of life when product runs out of stock	FIRMING V-SHAPING CREAM	ANTI-AGEING RENEWAL CREAM
PRICE	€64.00/50ML €1,280.00/L	€79.80/50ML €1,596.00/L	€79.80/50ML €1,596.00/L	€72.00/50ML €1,440.00/L	€72.00/50ML €1,440.00/L	€72.00/50ML €1,440.00/L	€109.00/50ML €2,180.00/L
TEXTURE	Gel-cream	Soft and melting cream	Light gel-cream	Rich, non-greasy emulsion	« Foam » cream	Light fluid	Light cream
ACTIONS	Hydrates, revitalising	Anti-wrinkle, plumping	Anti-wrinkle, plumping, matifying	Anti-ageing, focus on firmness	Anti-ageing, redensifying focus	Anti-ageing, focus refining	Global anti-ageing
DIFFERENTIATING FACTORS	<ul style="list-style-type: none"> • Exclusive LPG® Complex • Natural anti-exposome shield • Replenishing active hydration • Clinical studies 	<ul style="list-style-type: none"> • Exclusive LPG® Complex • Natural anti-exposome shield • Advanced multi-correction • Clinical studies 	<ul style="list-style-type: none"> • Exclusive LPG® Complex • Natural anti-exposome shield • Advanced multi-correction • Annatto seed • Clinical studies 	<ul style="list-style-type: none"> • Anti-ageing Exclusive LPG® Complex • Oat-based sugars 	<ul style="list-style-type: none"> • Anti-ageing Exclusive LPG® Complex • Lipoamino acid insulin biovector 	<ul style="list-style-type: none"> • Anti-ageing Exclusive LPG® Complex 	<ul style="list-style-type: none"> • Premium LPG® Complex

THE IN & OUT
CONCEPT LPG®:

THE HEALTH AND BEAUTY
OF THE SKIN MUST BE
WORKED FROM THE INSIDE

EFFECTIVE ANTI-WRINKLE TREATMENT:
COMBINING HYALURONIC ACID
& COLLAGEN FOR A FILLED,
SMOOTHER AND PLUMPER SKIN



endermonutri HYALURONIC ACID

THE STAR MOLECULE FOR PLUMPER SKIN

Hyaluronic acid is renowned for its excellent hydrating capacity. In fact, the quantity of hyaluronic acid in the skin is one of the key factors that determines the level of skin hydration. It can fill in wrinkles and reshape facial contours. When absorbed in the dermis, it will stimulate the natural production of hyaluronic acid to establish a real moisture reserve. The hyaluronic acid will then spread into all the surface layers of the epidermis, to intensely hydrate and encourage cell renewal.

PROVEN HYDRATING AND ANTI-AGEING EFFECTIVENESS*

MORE HYDRATED SKIN

From the very 1st program, after 28-days, an objective increase in skin hydration is observed (instrumental measurement using corneometry):

- Hydration: +10%
- Limits skin dehydration (-4% Trans Epidermal Water Loss)

A VISIBLE ANTI-AGEING EFFECT

- Plumper skin: +5%

**BETTER HYDRATED, THE EFFECTS OF AGEING ARE DIMINISHED,
THE SKIN IS PLUMPER AND FILLED IN.**

HOW TO USE:

Take 1 capsule per day with a glass of water during a meal.



*Tested during a clinical study on 60 women who took 1 EXCEPTIONHYAL STAR® hyaluronic acid capsule per day for 28 days.

endermonutri COLLAGEN

REDENSIFY THE SKIN FROM THE INSIDE WITH A COCOA SHOT

Collagen is present in the dermis in large quantities, accounting for 70% of its composition, helping the skin to perform its support role. But, as time passes, the collagen fibers become thinner and the elastin fibers are damaged, causing a loss of skin firmness, which becomes gradually more noticeable.

PROVEN ANTI-WRINKLE EFFECTIVENESS*

SIMPLY FEWER WRINKLES!

After just 28 days, a reduction in the number of deep wrinkles is observed: -19%

A PROTECTIVE ANTI-AGEING EFFECT AGAINST EXTERNAL AGGRESSION

- After 3 months, the skin is strengthened



LPG® COLLAGEN AND ELASTIN PEPTIDES STIMULATE THE BIOSYNTHESIS OF THE MAIN INGREDIENTS IN THE DERMIS TO LIFT AND TONE SAGGING AREAS, REDUCING VISIBLE WRINKLES AND FINE LINES.

HOW TO USE :

Dilute 1 sachet a day in 100 ml of hot water or hot (plant-based or animal) milk



*Tested during a clinical study on 44 women aged to 40 to 55 with crow's feet wrinkles who took 2g of COLLECTIVE™ active ingredient for 84 days.

AN EXCLUSIVE
LPG® PROTOCOL:
AGE DEFYING REPLUMPING
CELLULAR STIMULATION
COMBINED WITH NEW
ANTI-WRINKLE SKINCARE



AN EXCLUSIVE LPG® PROTOCOL: CELL STIMULATION COMBINED WITH NEW ANTI-WRINKLE SKINCARE

A COMPREHENSIVE ANTI-AGEING TREATMENT TO RELAUNCH AND MAINTAIN SKIN'S YOUTHFUL RESERVES

Over the years and despite a perfectly healthy lifestyle, the production of fundamental substances in the dermis - **collagen, elastin, hyaluronic acid** - gradually slows down, causing wrinkles, fine lines and furrows to appear, mainly on the face, neck and décolleté.

To **reduce and prevent the signs of skin ageing**, the LPG® experts have developed a treatment protocol that combines endermologie® cell stimulation with new cosmetic skincare products containing a high concentration of active ingredients.

Using a treatment head equipped with motorised valves, the endermologie® technique mechanically stimulates skin on the surface to reactivate the fibroblast synthesis process from within:

- ◆ the production of new high-quality collagen and natural hyaluronic acid (+80%*) restores volume to the dermis and thus "lifts" the bottom of the wrinkle.
- ◆ elastin synthesis (+46%*) leaves skin suppler and more resistant to the multiple muscle micro-contractions that are often responsible for "expression lines".

As a complement to this cell awakening, **manual movements inspired by KOBIDO** have been incorporated to offer a perfect alchemy between efficacy and sensory experience.

The LPG® brand has combined the best of its techniques to offer a **comprehensive and pleasant anti-ageing treatment** while maintaining the face's natural expressions.

TREATMENT ACTIONS

Stimulates the natural production of collagen, elastin and hyaluronic acid.



Activates the blood and energy circulation

TREATMENT PROMISES

Wrinkles and fine lines smoothed (face, neck, décolleté)



Replenished, plump and hydrated skin



Anti-ageing prevention & correction

AN EXCLUSIVE LPG® PROTOCOL: CELL STIMULATION COMBINED WITH NEW ANTI-WRINKLE SKINCARE

The endermologie® Anti-Ageing Filler treatment combines cell stimulation, anti-wrinkle and lifting movements to take targeted, effective action on the marks of time. Lasting 35 minutes, this treatment is made up of three key moments.

PHASE 1

REMOVE MAKE-UP AND PREPARE SKIN

Apply **Preparing Micellar Water** all over the face and neck using soaked cotton pads for skin cleansed of make-up and ready to receive cell stimulation.

PHASE 2

STIMULATE YOUTH CELLS

The **Ergolift® treatment head** is gently used on the areas most prone to wrinkles: décolleté, neck, cheek, mouth, furrows, eye contour area, forehead. Using specific settings, movements and strokes, this mechanical stimulation helps to boost the natural production of collagen, elastin and hyaluronic acid to fill in superficial and deep wrinkles, plump and firm skin.

PHASE 3

SMOOTH & PLUMP

To bring it to a beautiful close and extend this moment of relaxation, the treatment finishes with the application of the new cosmetic skincare: **Eye Cream, Milky Smoothing Filler Serum, Smoothing Filler Cream or Smoothing Filler Gel-Cream**. A sequence of manual movements, mainly **smoothing and pinching strokes inspired by the KOBIDO technique**, is performed on the face, neck and décolleté. This technique supplements the work previously carried out, while improving the blood and energy circulation. Stimulated and better vascularised, skin thus assimilates the active ingredients from the cosmetic skincare more quickly for optimised results.

The endermologie® Anti-Ageing Filler treatment should be performed twice a week for five weeks as a booster period.

The number of sessions required is determined according to your client's assessment.

Upgrade to the CELLU M6 ALLIANCE® software, MOBILIFT M6® Connect and the endermoscan™ application: October 2022.

STEPS AND COSTS OF TREATMENT

DURATION: **35 MINUTES**

RECOMMENDED FRENCH RETAIL PRICE: **€65,00 INCL. TAX.**

STEPS	ACTIONS	COSMETICS	FACE endermologie®	QUANTITIES	TIME	PRICE excl.tax	PRICE inc.tax
1	Complete the make-up removal	PRO PREPARING MICELLAR WATER 400ML	NO	10ml	1 min	€0.60	€0.72
2	Activate cellular exchanges	-	YES	-	30 min	-	-
3	Smooth, plump	PRO EYE CREAM 75ML PRO SMOOTHING FILLER MILK SERUM 100ML PRO SMOOTHING FILLER CREAM 200ML	NO	1ml 2ml 1,3ml	4 min	€0,62 €1,30 €0,41	€0.74 €1.56 €0.49
TOTAL					35'	€2.93	€3.51

ESTIMATED PROFIT PER TREATMENT: €61.49

(35 minutes treatment €65.00 incl. tax - costs incl. tax resulting from the skincare used €3.51)

*Costs excl. Tax calculated based on the French Catalog Price excl. tax

PRO Expert Cleansing Balm: €31.20 excl. tax / PRO Preparing Micellar Water : €24.00 excl. tax / PRO Smoothing Filler Milk Serum: €65.00 excl. tax / PRO Eye Cream: €29.00€ excl. tax / PRO Smoothing Filler Cream: €63.20 excl. tax

STEPS AND COSTS OF TREATMENT (WITH OPTIONS)

DURATION: 65 MINUTES

RECOMMENDED FRENCH RETAIL PRICE: €95 INCL. TAX.

 OPTIONS

OPTIONAL:
Double make-up removal:
Expert Cleansing Balm + Exfoliating Cream
+ Active Replenishing Essence -> 10min/€10
•
Application of the Post-Care Collagen Mask
-> 20min/€20

STEPS	ACTIONS	COSMETICS	FACE endermologie®	QUANTI- TIES	TIME	PRICE excl.tax	PRICE inc.tax
1	Remove make-up	PRO EXPERT CLEANSING BALM 200ML	NO	3ml	3 min	€0,47	€0,56
2	Complete the make-up removal	PRO PREPARING MICELLAR WATER 400ML	NO	10ml	1 min	€0,60	€0,72
3	Exfoliate	PRO EXFOLIATING CREAM 200ML	NO	3ml	5 min	€0,48	€0,58
4	Prepare	PRO ACTIVE REPLENISHING ESSENCE 400ML	NO	1ml	1 min	€0,09	€0,11
5	Activate cellular exchanges	-	YES	-	30 min	-	-
6	Soothe and moisturize	POST-CARE COLLAGEN MASK 1X	NO	1 mask	20 min	€9,50	€11,40
7	Smooth, plump	PRO EYE CREAM 75ML PRO SMOOTHING FILLER MILK SERUM 100ML PRO SMOOTHING FILLER CREAM 200ML	NO	1ml 2ml 1,3ml	4 min	€0,62 €1,30 €0,41	€0,74 €1,56 €0,49
TOTAL					65'	€13,47	€16,16

ESTIMATED PROFIT PER TREATMENT: €78,84

*Costs excl. Tax calculated based on the French Catalog Price excl. tax

PRO Expert Cleansing Balm: €31,20 excl. tax / PRO Preparing Micellar Water : €24 excl. tax / PRO Exfoliating Cream: €32,00 excl. tax / PRO Active Replenishing Essence: €36,00 excl. tax / Post-care Collagen Mask: €9,50 excl. tax / PRO Smoothing Filler Milk Serum: € 65,00 excl. tax / PRO Eye Cream: €29,00€ excl. tax / PRO Smoothing Filler Cream: €63,20 excl. tax

AVAILABLE TOOLS

POS MATERIALS



WINDOWS SHOWCARD

100x70cm

Layouts available in different languages on the LPG® extranet



COUNTER DISPLAY

30x19,5cm

Layouts available in different languages on the LPG® extranet



SET OF 4 CUBES

17x17cm

Layouts available in different languages on the LPG® extranet



TOTEM

45x140cm

Layouts available in different languages on the LPG® extranet

AVAILABLE TOOLS POS MATERIALS

PLV



EASEL

Format A5

Layouts available in different languages
on the LPG® extranet



LAUNCH VIDEOS*

ANIMATION



VELVET POUCH

Réf : 102448000



SHOPPING BAG*

20x10x17cm**

Réf : 102590300

AVAILABLE TOOLS POS MATERIALS

PRESS RELATIONS



PRESS FILE*



PAPER PROTOCOL*



NEWSLETTER*

SALES TOOLS



**VIDEOS*
(TUTORIEL & TEASER)**



**NEW 2023
SAMPLE CARDS**



FLYER

A4 FORMAT

Layouts available in different languages
on the LPG® extranet

FRENCH BEAUTY SALON OFFER

**ANTI-WRINKLE OFFER:
STARTING AT €589.60* INCL. TAX**

CUSTOMER OFFER

- ◆ 4x Age Defying Replumping treatment without option (35min)
- ◆ 2x Age Defying Replumping treatment with option (65min)
- ◆ 1x Smoothing Filler Gel-Cream
- ◆ 1x endermocell anti-wrinkle product to choose*

FREE

- ◆ 1x Velvet Pouch (value 30€)

**ANTI-WRINKLE OFFER + ADD-ON:
STARTING AT €635.60** INCL. TAX**

CUSTOMER OFFER

- ◆ 4x Age Defying Replumping treatment without option (35min)
- ◆ 2x Age Defying Replumping treatment with option (65min)
- ◆ 1x Smoothing Filler Gel-Cream
- ◆ 1x endermocell anti-wrinkle product to choose**
- ◆ 1x 28-day Collagen Cure

FREE

- ◆ 1x Velvet Pouch (value €30)
- ◆ 1x 28-day Acid Hyaluronic Cure (value €41)

*Sell-out price example includes: Age Defying Replumping treatment without option + Age Defying Replumping treatment with option + Smoothing Filler Gel-Cream + Eye Cream

**Sell-out price example includes: Age Defying Replumping treatment without option + Age Defying Replumping treatment with option + Smoothing Filler Gel-Cream + Eye Cream + Collagen

1ST ANTI-WRINKLE OFFER

YOU BUY

€343.20 EXCL. TAX / €411.84 INCL. TAX*

- ◆ 4x Smoothing Filler Gel-Cream
- ◆ 1x PRO Smoothing Filler Gel-Cream
- ◆ 4x endermocell anti-wrinkle product to choose*

FREE FROM LPG®

€129.95 EXCL. TAX / €155.94 INCL. TAX

- ◆ 12x Sample Quartet
- ◆ 10x Shopping Bag
- ◆ 4x Velvet Pouch

4 CUSTOMER OFFERS

€2,358.40 sold / €411.84 EXCL. TAX purchased****

ESTIMATED PROFITS: €1,946.56**

NUTRI
SELL-IN TIP:
ALWAYS PROPOSE
endermonutri
COLLAGEN
& HYALURONIC
ACID

*Price calculated with 4 Eye Cream (€29.90 EXCL. TAX / €35.88 INCL. TAX)

**Without nutricosmetics

2ND ANTI-WRINKLE OFFER

YOU BUY

€518.50 EXCL. TAX / €622.20 INCL. TAX

- ◆ 7x Smoothing Filler Gel-Cream
- ◆ 8x endermocell anti-wrinkle product to choose*

FREE FROM LPG®

€333.85 EXCL. TAX / €400.62 INCL. TAX

- ◆ 1x Smoothing Filler Gel-Cream
- ◆ 1x PRO Smoothing Filler Gel-Cream
- ◆ 12x Sample Quartet
- ◆ 10x Shopping Bag
- ◆ 8x Velvet Pouch

8 CUSTOMER OFFERS

€4,716.80 sold / €622.20 EXCL. TAX purchased****

ESTIMATED PROFITS: €4,094.60**

NUTRI
SELL-IN TIP:
ALWAYS PROPOSE
endermonutri
COLLAGEN
& HYALURONIC
ACID

*Price calculated with 4 Eye Cream (€29.90 EXCL. TAX / €35.88 INCL. TAX)

**Without nutricosmetics

PRO RESTOCKING ANTI-WRINKLE OFFER

YOU BUY

€112.00 EXCL. TAX / €134.40 INCL. TAX

- ◆ 1x PRO Eye Cream
- ◆ 1x PRO Smoothing Filler Cream

FREE FROM LPG®

€66.00 EXCL. TAX / €79.20 INCL. TAX

- ◆ 1x PRO Smoothing Filler Milk Serum

FRANCE ENDERMONUTRI SELL-IN ADD-ON

THE BEST WAY TO PROMOTE
OUR GLOBAL IN&OUT STRATEGY

SELL-IN ADD-ON STARTING AT:
€92.00 EXCL. TAX / €97.06 INCL. TAX

YOU BUY

◆ 4x 28-day Collagen Cure

FREE FROM LPG®

◆ 4x 28-day Hyaluronic Acid Cure

4 IS THE MINIMUM QUANTITY
TO UNLOCK endermonutri ADD-ON

CONCLUSION PERSONAE

RETURN



THE COCOONING

The endermocell Anti-Wrinkle range offers four products with particularly sensory textures that lead to a real moment of relaxation. With a view to an even more eco-friendly approach, the brand is committed to using 100% recyclable airless packaging to respect the environment as much as possible. The products are used in synergy with a particularly relaxing salon treatment. This treatment includes a first cell stimulation phase and ends with a manual massage phase performed by a beauty therapist. To complete this skincare regimen, we also include two nutricosmetics. Combining efficacy and pleasure, these nutricosmetics reinforce the overall experience. This entire protocol makes it possible to have plump, glowing skin. The face is rested and relaxed; the complexion has a youthful glow.



THE SEXY

To counter the loss of our skin's support fibres, LPG® offers a comprehensive regimen: a skincare range combined with an innovative protocol to restore a plump face and filled-in wrinkles. The features are unlined and visibly smoothed to give plump, glowing skin. 87%* of wrinkles are smoothed from the very first salon treatment. In combination with cosmetic skincare and the Cellu M6 Alliance treatment, we offer a duo of nutricosmetics to boost all the effects: Hyaluronic Acid and Collagen. The potential of this high-performance skincare makes it possible to target all wrinkles, from fine lines to deeper wrinkles.



THE CONFIDENT

LPG® offers a 360° skincare regimen, the cosmetics and nutricosmetics range is offered with an endermologie® protocol. Skin is better hydrated and the signs of ageing reduced. The skincare is based on a global fundamental multi-correction concept. This concept makes it possible to meet all your skin's everyday needs while combining an action to restore the density of skin tissue support fibres. LPG® banks on a complex of anti-ageing peptides to compensate for this loss of support. Through this well-being protocol, we offer highly effective products to restore healthy, rested skin.



THE INSECURE

On a daily basis, the signs of ageing can cause a loss of confidence. Our endermocell Anti-Wrinkle range makes it possible to fill in and treat these wrinkles deep down. The results are scientifically proven and visible from the very first session. The combination of a multi-correction treatment and targeted correction reinforces the action to slow down the appearance of wrinkles. Skin is hydrated, protected from the exposome and specifically treated to reveal all its potential. Your face becomes smooth and your skin glows with youthfulness.

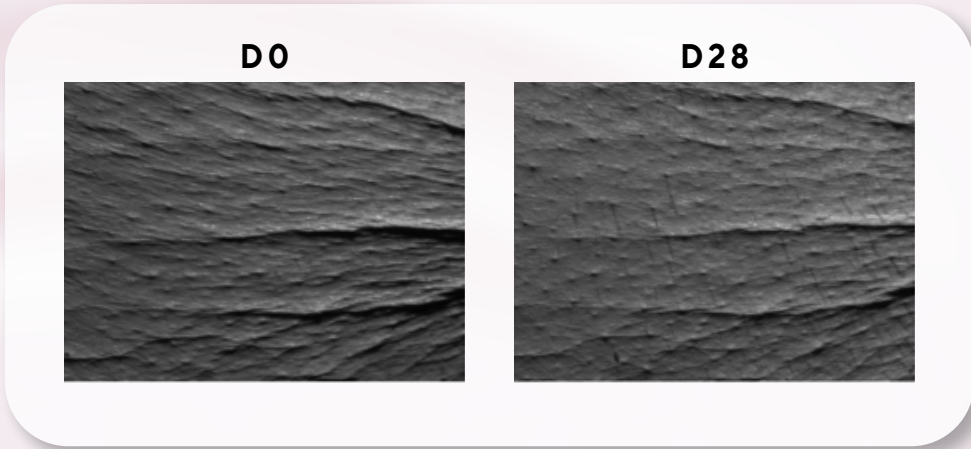


APPENDICES

APPENDIX EYE CREAM RESULTS



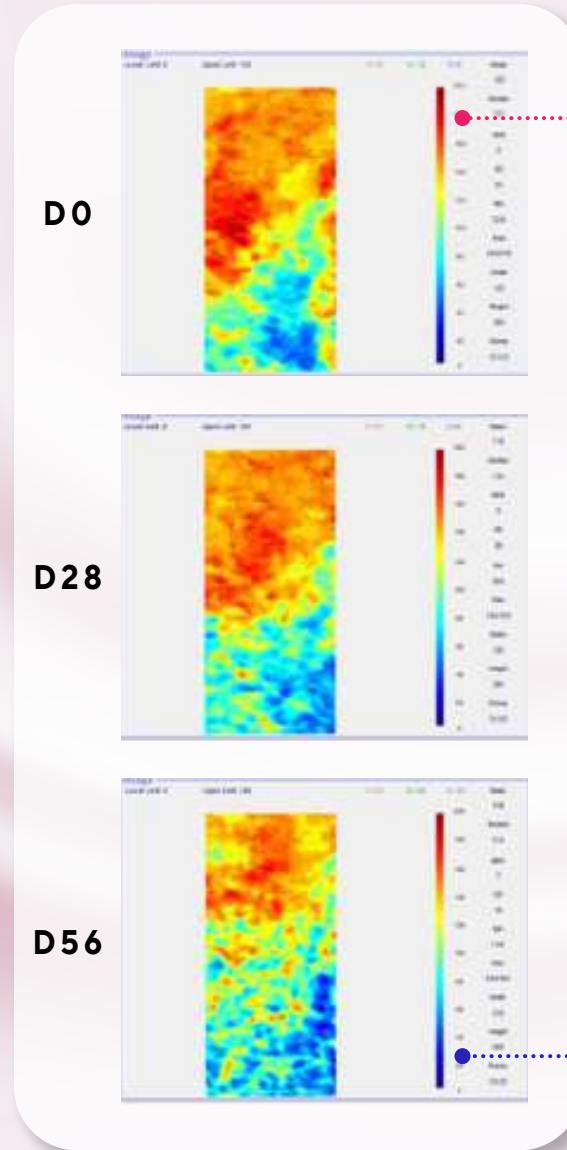
• Anti-wrinkle effect - SIA®:



• Anti-wrinkle effect - pictures:



• Anti-dark circle effect - TiVi 700®:



High concentration
of red blood cells
=
Stagnation of blood flow
=
Dark circles

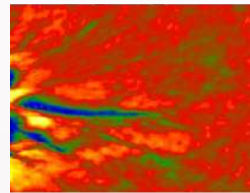
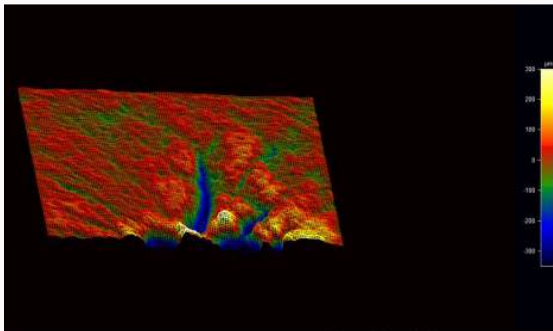
Low concentration
of red blood cells
=
Activation of blood flow
=
Anti-dark circle effect

APPENDIX SMOOTHING FILLER MILK SERUM RESULTS

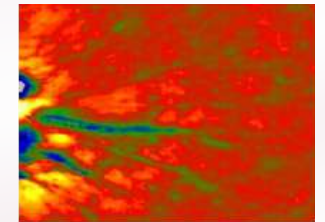
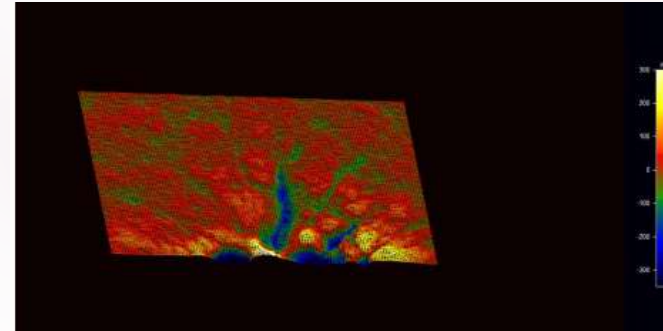
RETOUR

- Smoothing effect- 3D PRIMOS® LITE pictures:

D0



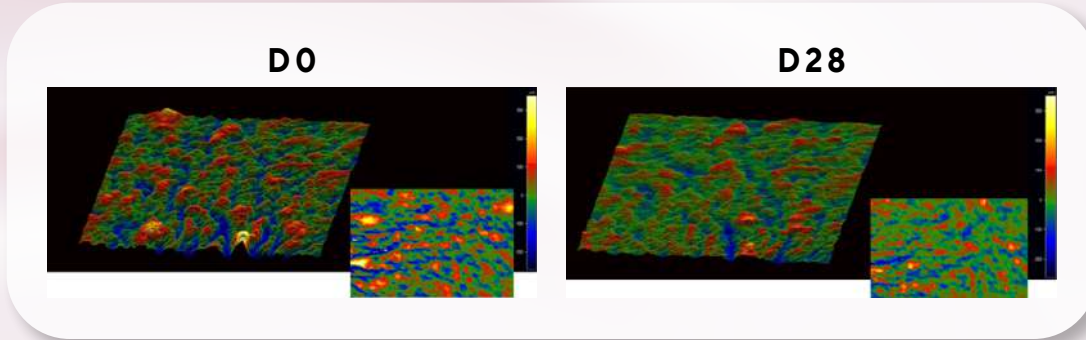
D28



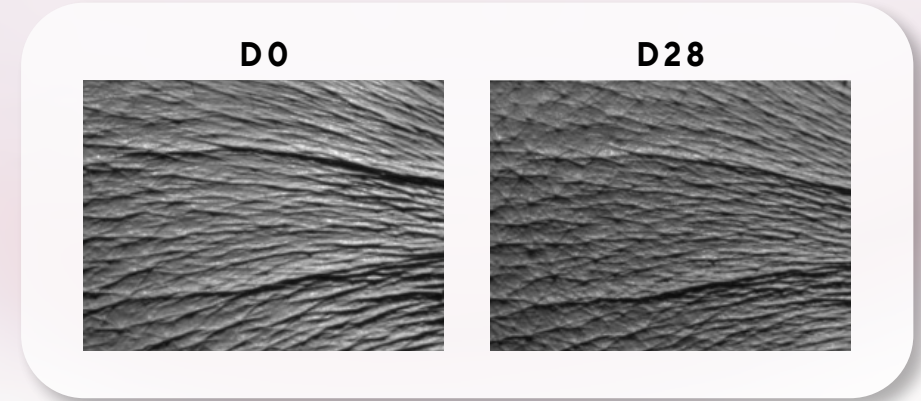
APPENDIX SMOOTHING FILLER CREAM RESULTS

RETURN

- Smoothing effect - 3D PRIMOS® Lite pictures:



- Smoothing effect - Skin Image Analyser® (S.I.A®)



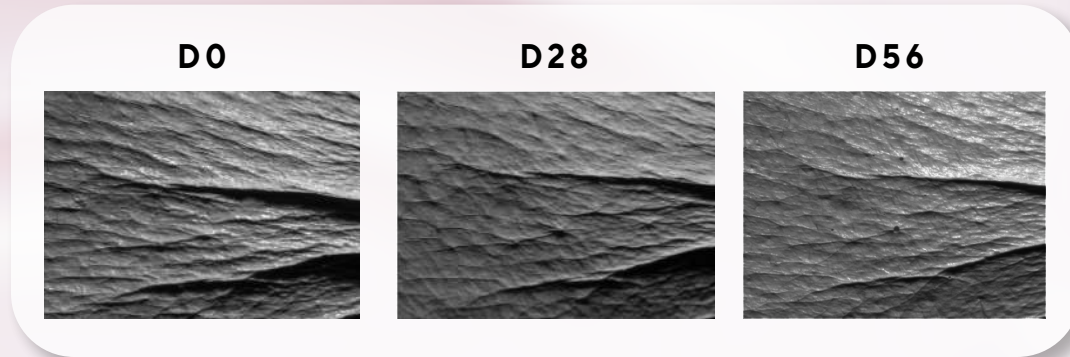
- Anti-wrinkle effect:



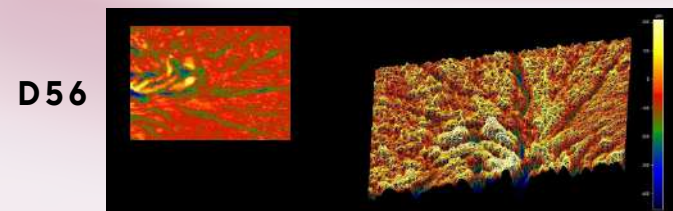
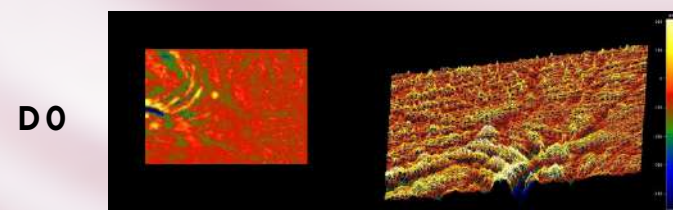
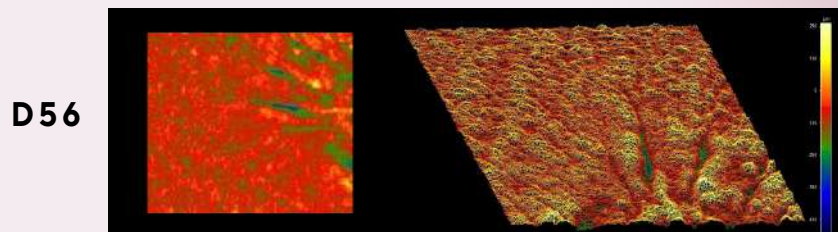
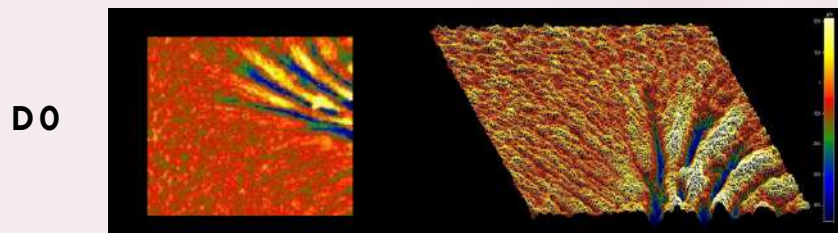
APPENDIX SMOOTHING FILLER GEL-CREAM RESULTS

RETOUR

- Anti-wrinkle effect - Skin Image Analyser® (S.I.A®)



- Smoothing effect-3D PRIMOS-CR® pictures





**INNER POWER.
BETTER LIFE.**

endermologie.com